



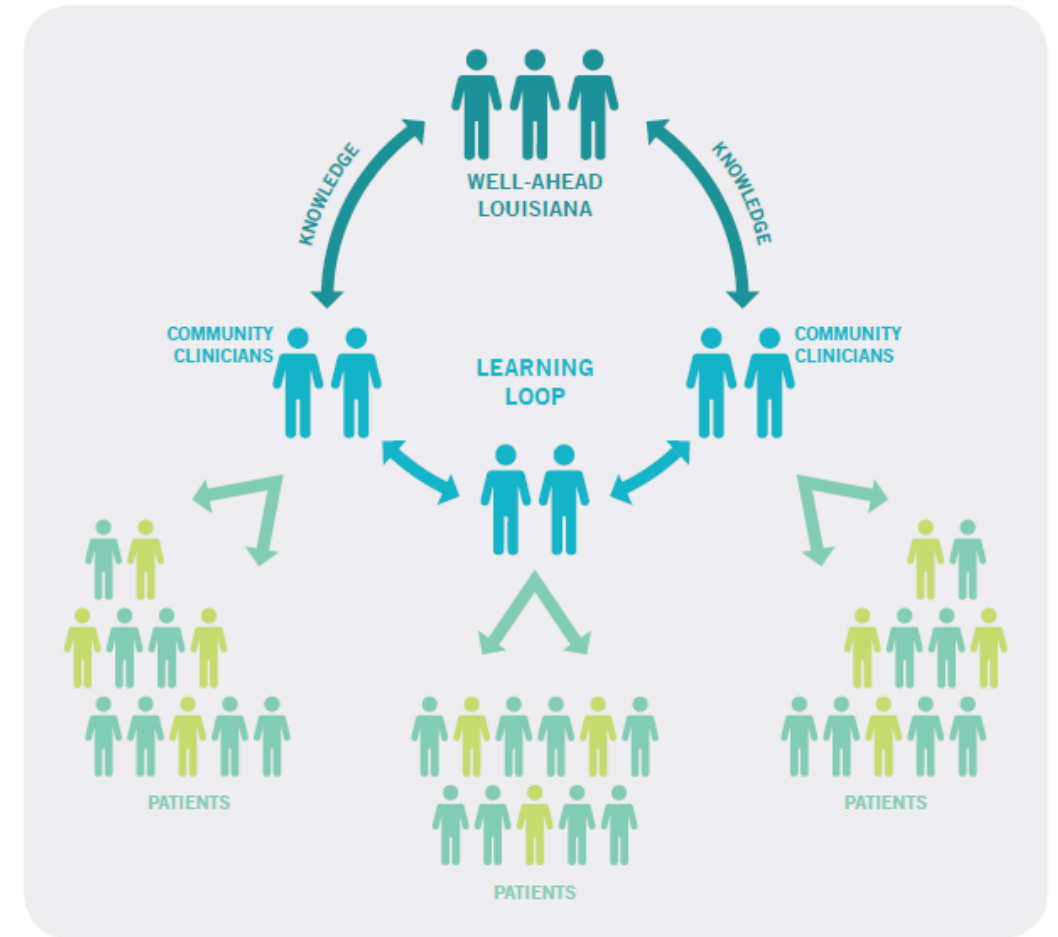
# Didactic Presentation

# What is ECHO?

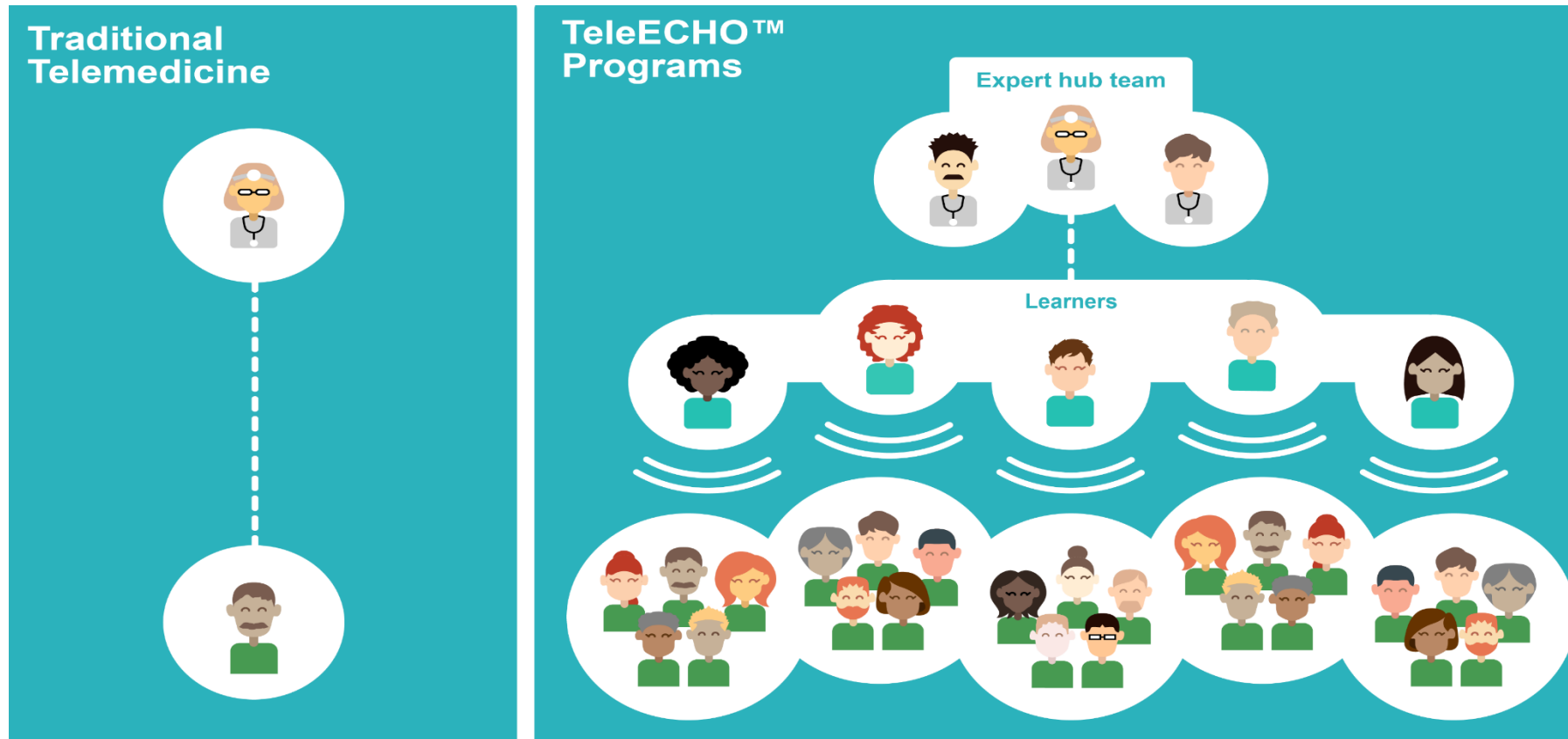
- Project ECHO® (Extension for Community Healthcare Outcomes) is a movement to demonopolize knowledge and amplify the capacity to provide best practice care for underserved people all over the world.
- The model **connects primary care providers and specialists** on a live, virtual platform to share knowledge and expand treatment capacity in rural communities.

# What is ECHO?

- ECHO functions on a “hub and spoke” model.
  - Hub Team is made up of a group of relevant specialists
  - Spoke Sites are community providers/clinics
- ECHO sessions function like virtual grand rounds, combined with mentoring and patient case presentations.
  - Spoke sites will present patient cases and participants will discuss and help determine the best treatment for the patient.
  - Specialists serve as mentors and colleagues, sharing their medical knowledge and expertise with primary care clinicians.



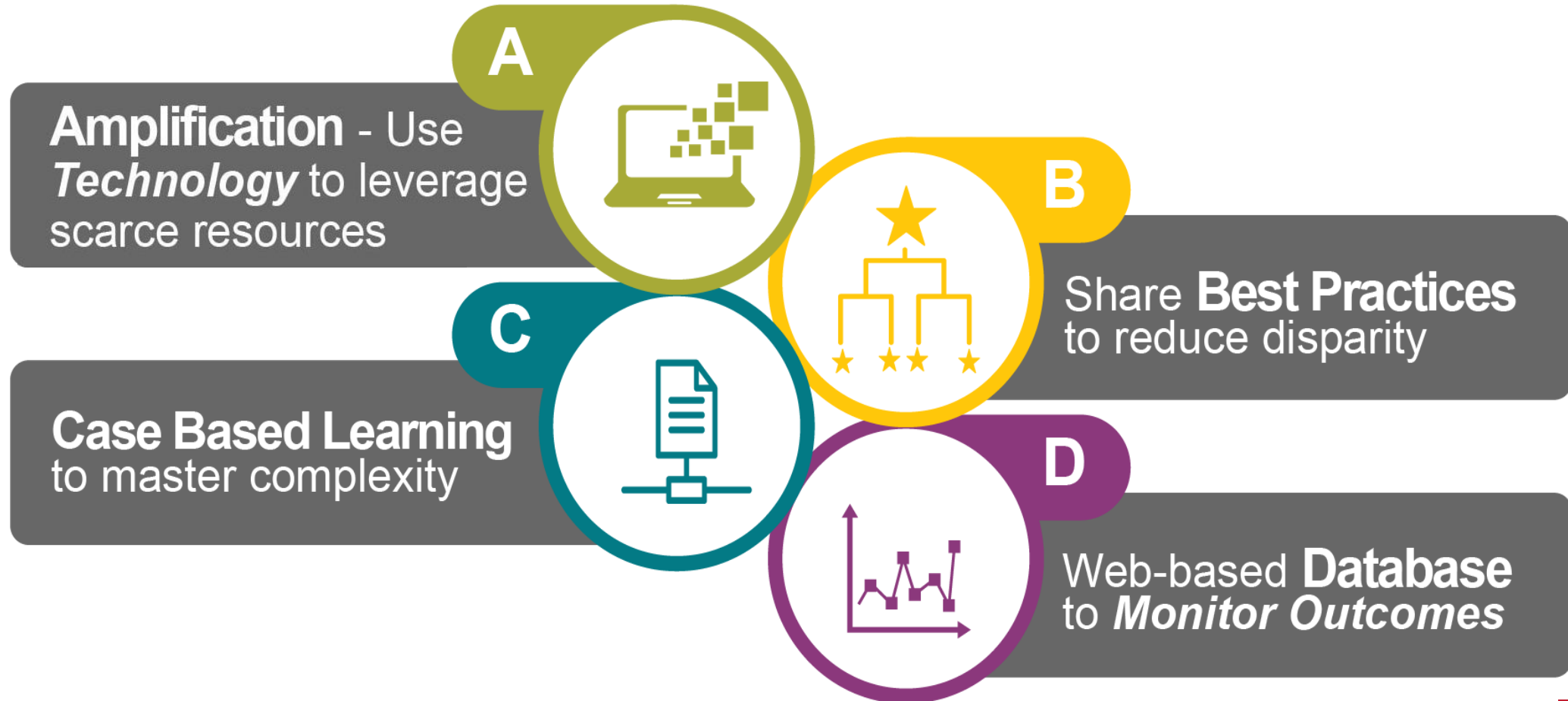
# What is ECHO?



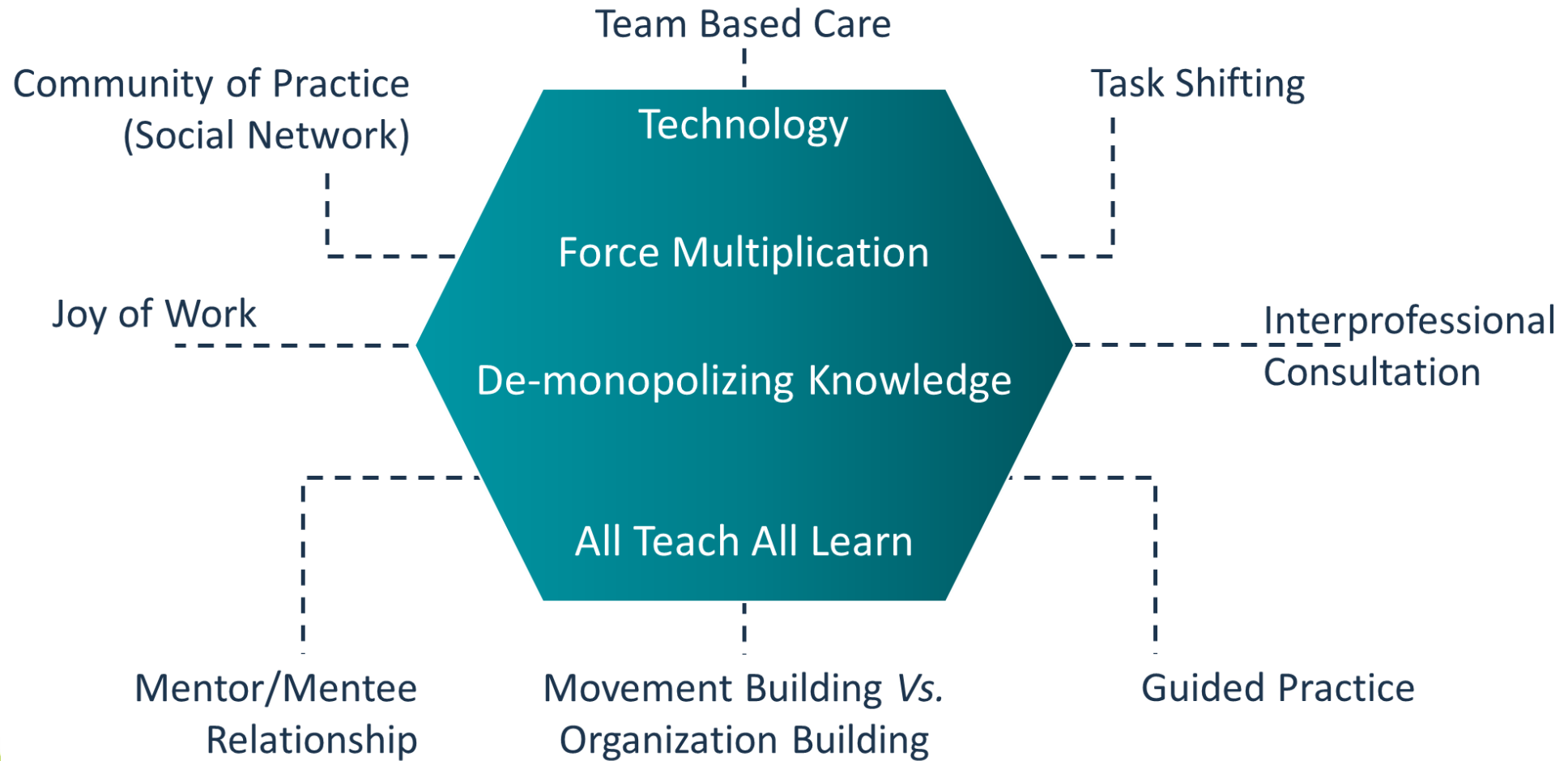
ECHO model is not 'traditional telemedicine'.

Treating Physician retains responsibility for managing patient.

# What is ECHO?



# Why it works



# How it's used



## Prevention

Smoking  
cessation  
HPV vaccination  
Hepatitis B  
vaccination  
Sun safety & skin  
cancer prevention  
Community cancer  
intervention &  
prevention



## Screening

Dermatology  
Breast cancer  
Cervical &  
colorectal cancer  
Oral & lung cancer  
Pathology best  
practices  
Training peer and  
community health  
advocates

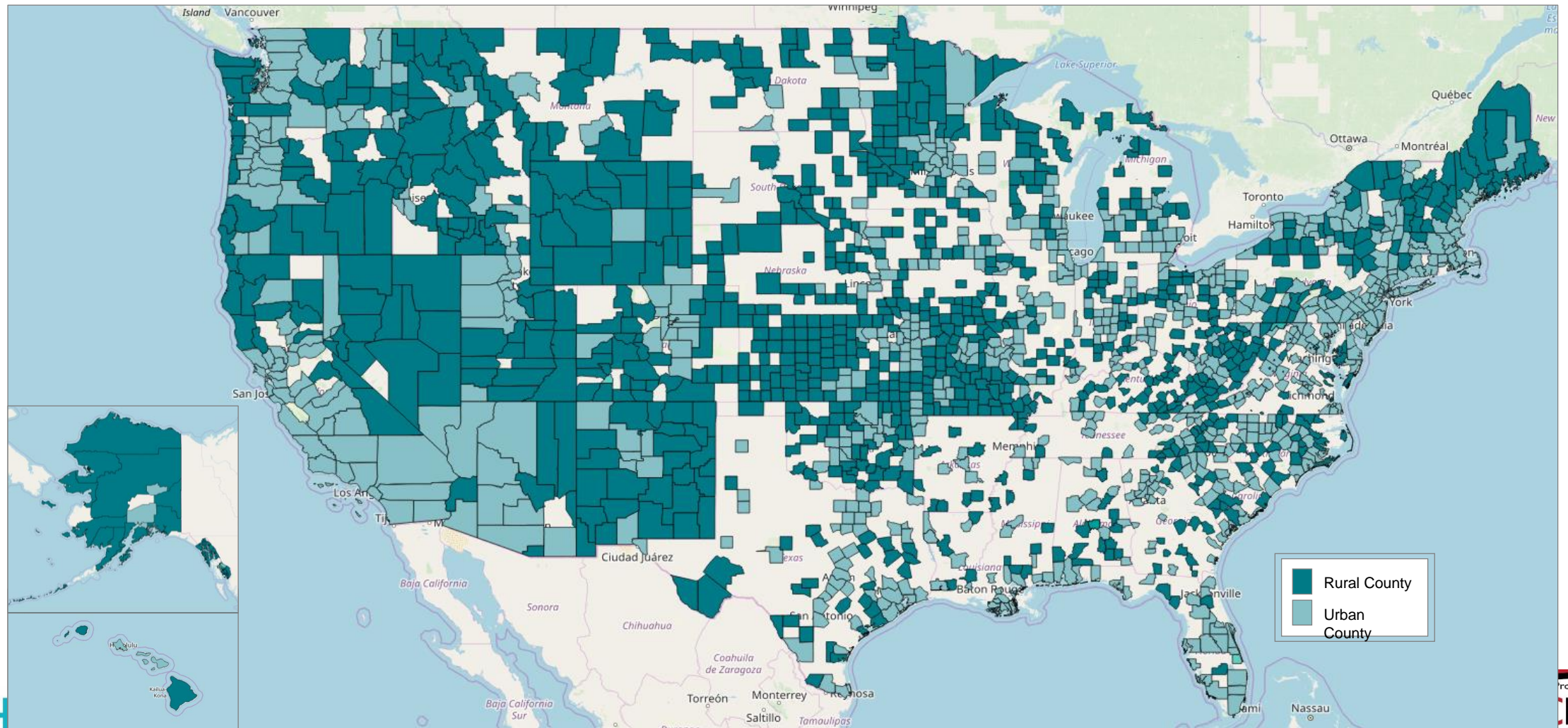


## Treatment

Pain & toxicity  
management  
Cancer care  
navigation  
Precision medicine  
& cancer genomics  
Palliative care  
Survivorship  
Clinical trial  
enrollment



# Where it's used





# Benefits of ECHO

- Quality and Safety
- Rapid Learning and best-practice dissemination
- Reduce variations in care
- **Access for Rural and Underserved Patients, reduced disparities**
- Workforce Training and Force Multiplier

## Safe Learning Environment

- Improving Professional Satisfaction/Retention
- Supporting the Medical Home Model
- Cost Effective Care- Avoid Excessive Testing and Travel
- Prevent Cost of Untreated Disease (e.g.: liver transplant or dialysis)
- Integration of Public Health into treatment paradigm

## Democratize Knowledge

# Benefits of ECHO

## Doing More for More Patients



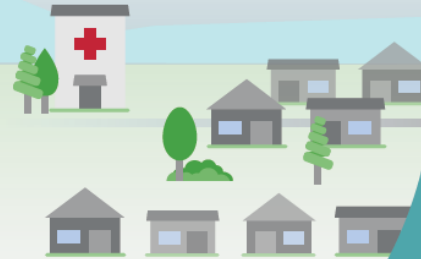
### PATIENT

- Right Care
- Right Place
- Right Time



### PROVIDER

- Acquire New Knowledge
- Treat More Patients
- Build Community of Practice



### COMMUNITY

- Reduce Disparities
- Retain Providers
- Keep Patients Local



### SYSTEM

- Increase Access
- Improve Quality
- Reduce Cost

# Our Diabetes ECHO Overview

- Well-Ahead Louisiana will serve as the “hub” of specialists, including an Endocrinologist, an Internal Medicine Physician, a Certified Diabetes Educator, a Nurse Practitioner, a Pharmacist, and a Cardiologist and a Podiatrist (rotating).
- All clinicians in the community who work with patients with diabetes are invited to join as “spokes” of the model – focus on rural primary care providers.
- Beginning January 12, 2021 - sessions will be held every other Tuesday, 12:00PM to 1:00PM
- CEUs will be available for physicians, nurses, and pharmacists