

# Virtual Tabletop Exercise Series

Hurricane Scenario and Lessons Learned from 2020



# Agenda

- What to Expect
- Objectives
- Outcomes
- Definitions
- Exercise
- Hotwash
- Reflection: 2020 Atlantic Hurricane Season
- Next Steps

# What To Expect

- **What is a Tabletop Exercise?**
  - Discussion-based sessions where team members meet in an informal, classroom setting to discuss their roles during an emergency and their responses to a particular emergency situation and a facilitator guides participants through a discussion of one or more scenarios
- Our exercise is being conducted virtually. You will be provided a scenario and are expected to discuss your facilities activities during the allotted time.
- I will randomly call upon facilities to share what was discussed

# What To Expect

- Your microphone will be muted by the facilitator until called upon
  - Use the “Chat” feature if you want to type a question or make any comments
- A scenario will be presented followed by related questions.
- Take notes on the handout provided. These notes can be used to develop your After Action Report/Improvement Plan documentation
- The more you are engaged during this exercise, the better your final product will be

# Objectives

- **Core Capability: Prevention**

- Identify critical objectives during the planning process, provide a complete and integrated picture of the sequence and scope of the tasks to achieve the objectives, and ensure the objectives are implementable within the timeframe contemplated within the plan using available resources for prevention-related plans

- **Core Capability: Protection**

- Implement risk-informed guidelines, regulations, and standards to ensure the security, reliability, integrity, and availability of critical information, records, and communications systems and services through collaborative cybersecurity initiatives and efforts

# Outcomes

- Reveal planning weaknesses in the Emergency Operations Plan and standard operating procedures or to test or validate recently changed procedures
- Identify current capabilities
- Improve the coordination between and among various response personnel
- Identify deficiencies and/or validate training on the critical elements of emergency response
- Increase the general awareness and understanding of the potential hazard

# Definitions

- **Hurricane Watch:** hurricane conditions (sustained winds of 74 mph or higher) **are possible** within the specified area
- **Hurricane Warning:** hurricane conditions (sustained winds of 74 mph or higher) **are expected** somewhere within the specified area
- **Storm Surge:** a rise in sea level that occurs during tropical cyclones, intense storms also known as typhoons or hurricanes. The storms produce strong winds that push the water into shore, which can lead to flooding

**START OF EXERCISE**



# Hurricane Scenario

You've arrived at work. You have been monitoring the weather reports due to a large hurricane heading towards Louisiana. The National Weather Service has issued a hurricane watch for all of coastal Louisiana and Mississippi. Forecasters are warning that the storm has the potential to become a powerful hurricane.



# Discussion

- What triggers you to activate your Emergency Operations Plan (EOP) in regards to a Hurricane or storms related to a hurricane?
- How far in advance of landfall would you activate your Emergency Operations Plan?
- What part of your facilities Emergency Operations Plan would you activate at this point?

# Hurricane Scenario Inject #1

The storm is approximately 150 miles off the coast of Louisiana. The storm has been upgraded to a Category 1 Hurricane (Wendy). The local office of the National Hurricane Center issued a hurricane watch for large portions of the coast.



## South Louisiana

Heavy rainfall is expected, along with flooding of low-lying areas. The Governor has issued a mandatory evacuation order for Grand Isle and other low-lying coastal areas.

## Central/North Louisiana

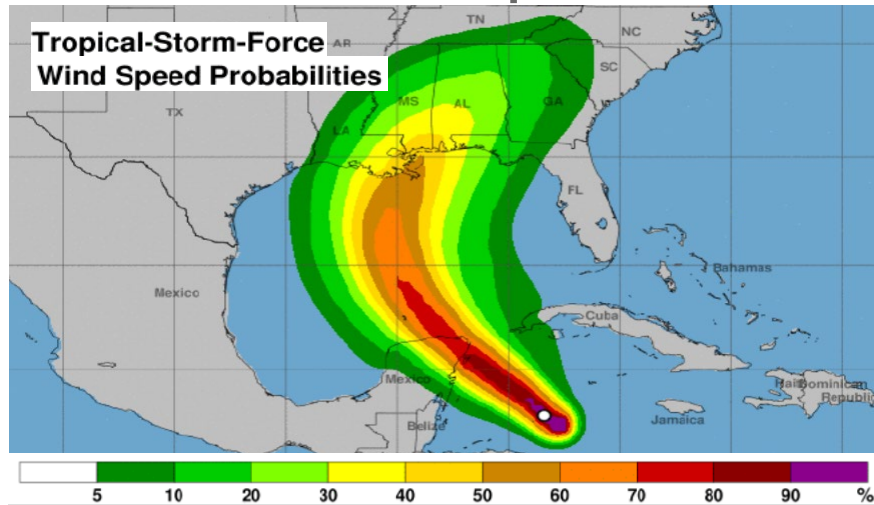
Residents of South Louisiana are evacuating to Central and North Louisiana. Central and North Louisiana can expect heavy rains and flooding post-landfall.

# Discussion

- What state and local partners would you be communicating with?
  - What type of information are you communicating?
- Would you plan to alter hours or close your facility?
  - What does your Emergency Operations Plan direct you to do to alter hours or close the facility?
- How are you communicating with your...
  - Staff? Patients? Community partners?
  - Select one of these groups and develop a statement of your current actions. Be specific.
- What is/are your back-up communications system(s) if your primary means of communication fail?

# Hurricane Scenario Inject #2

Hurricane Wendy has strengthened to a Category 2 storm; A storm surge of 8-10 feet is expected east of where the center will make landfall. Several major roadways are impassable due to traffic from the evacuation. Cell phone service is sporadic due to the amount of phone traffic



## South Louisiana

Citizens continue to evacuate from South Louisiana and move to Central and North Louisiana. Facilities in South Louisiana are bracing for hurricane impact within 48 hours.

## Central/North Louisiana

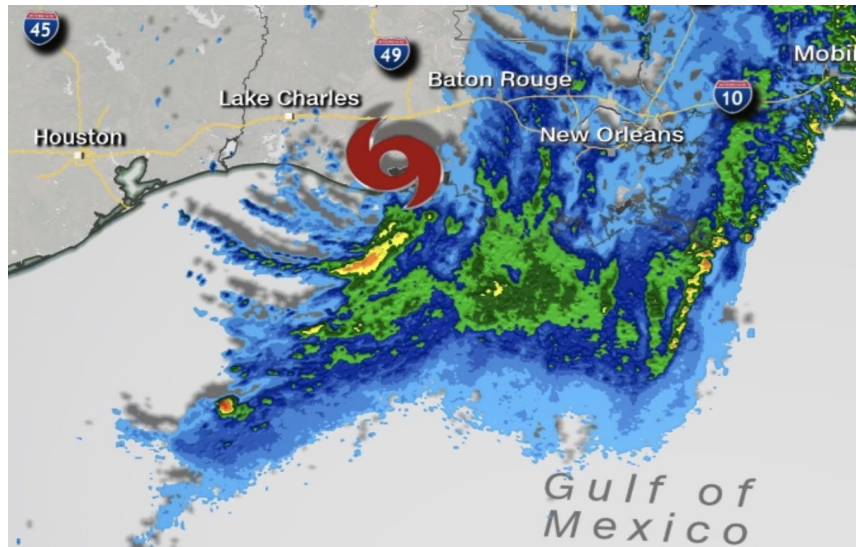
Central and North Louisiana are bracing for severe weather as a result of the hurricane. Facilities in Central and North Louisiana are receiving calls from evacuees for medications and minor illnesses.

# Discussion

- What process do you have for accounting for staff and patients?
- What message would you communicate to your...
  - Staff? Patients? Community partners?
- With sporadic cell service, how will you communicate with your employees, patients and community partners?
- Central and North Louisiana: How would your facility handle an influx of non-local citizens needing care?
- What does the next 24 hours look like for your facility?

# Hurricane Scenario Inject #3

Hurricane Wendy has made landfall as a Category 2 storm; The initial storm surge was recorded at 10 feet, with an additional 5-8 inches of rain falling in the past 24 hours; As a result, local waterways in south Louisiana are now 5 feet above flood stage



## South Louisiana

Damage reported by the media includes flooded homes and businesses across a widespread area, flooded and debris-clogged roadways, and large areas are without power.

## Central/North Louisiana

The storm is causing heavy rains and tornadoes in Central and North Louisiana.

# Discussion

- What are your immediate actions and priorities?
- What message would you communicate to your...
  - Staff? Patients? Community partners?
- How would you handle your medical records, whether paper or electronic?
  - What is your back-up plan?
- How are your patients able to reach you if refills or other services are needed?
- Specifically, what is your plan to secure any medications you keep on site?



# Hurricane Scenario Inject #4

Water is slowly receding. Residents have been permitted to return home, though thousands remain in temporary shelters

As the winds decrease and the rain tapers off, you are able to assess the damage from Hurricane Wendy:

- Your facility has experienced minor storm damage, but a contractor is needed for roof repair before you can reopen
- Your facility did lose power for 24 hours
- There is a boil water advisory for your city

# Discussion

- How would you manage the damages to your facility?
  - What critical services would you attempt to restore immediately?
- How would you support your community?
  - What services could you provide? How?
- What is your procedure when there is a boil water advisory?
- Are your vaccines protected during the power outage?
  - Discuss what your actions are related to vaccines.
- What message would you communicate to your...
  - Staff? Patients? Community partners?

**END OF EXERCISE**

# Hotwash

- What strengths in your workplace's emergency plans did this exercise identify?
- What weaknesses in your workplace's emergency plans did this exercise expose?
- What unanticipated issues arose during the exercise?
- What gaps were identified?
- What are some high-priority issues that should be addressed?
- What are some new ideas and recommendations for improvement?

# Reflection: 2020 Atlantic Hurricane Season

- 30 named storms and 13 became hurricanes
- Louisiana was indicated in the cone of uncertainty 8 times
- Louisiana experienced an unprecedented 5 direct landfalls

2020 Landfall Date	Landfall Location	Category	Name
Jun. 7	Port Sulfur	Tropical Storm	Cristobal
Aug. 24	Mississippi River	Tropical Storm	Marco
Aug. 27	Cameron	Cat. 4 Major Hurricane	Laura
Oct. 9	Creole	Cat. 2 Hurricane	Delta
Oct. 27	Cocodrie	Cat. 2 Hurricane	Zeta



# Next Steps

- Collect all of your notes
- Meet with key people at the facility to discuss
- Develop an After Action Report/Improvement Plan
- Update Standard Operating Procedures/Policies
- Train team members

# Stay Connected With Us!

- Well-Ahead Louisiana Provider Education Network
  - [www.wellaheadla.com](http://www.wellaheadla.com)
    - Provider Education Network: [www.wellaheadla.com/move-well-ahead/provider-education-network](http://www.wellaheadla.com/move-well-ahead/provider-education-network)
    - Emergency Preparedness: [www.wellaheadla.com/move-well-ahead/provider-education-network/education-and-training/emergency-preparedness](http://www.wellaheadla.com/move-well-ahead/provider-education-network/education-and-training/emergency-preparedness)
  - [wellahead@la.gov](mailto:wellahead@la.gov)
- Nicole Coarsey
  - [Nicole.Coarsey@la.gov](mailto:Nicole.Coarsey@la.gov)

# Thank You for Joining Us!

Virtual Tabletop Exercise Series

