

RURAL **HEALTH** WORKSHOP

New Advances in Alzheimer's Treatments



Speaker

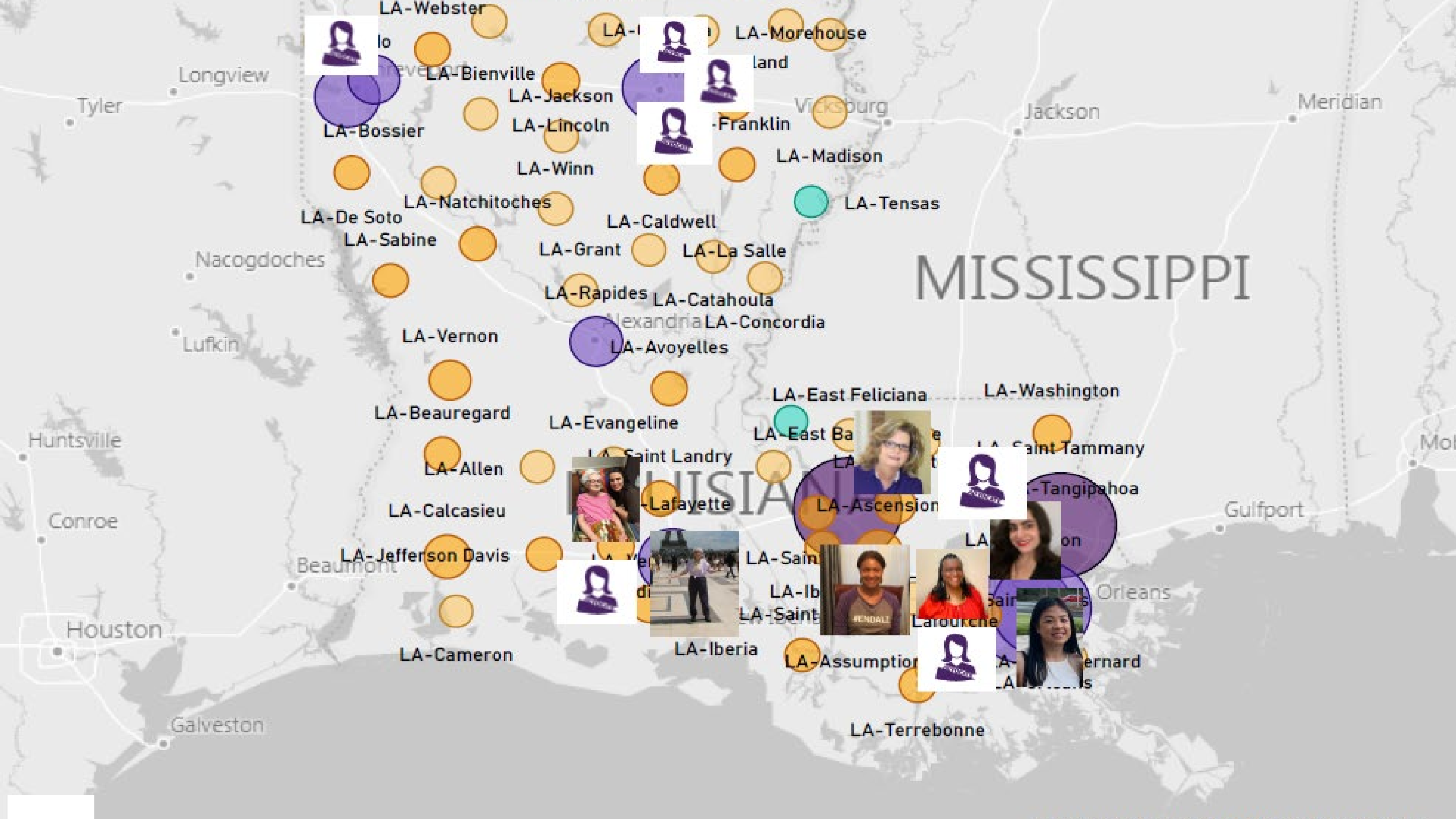
- Stacey Denham, MPH, MSW
 - Associate Director of Programs and Public Policy
 - Alzheimer's Association Louisiana Chapter

New Advances in Alzheimer's Treatments

800.272.3900 | [alz.org](https://www.alz.org)

alzheimer's  association®





Learning Objectives:



List the
FDA-approved
treatments for
Alzheimer's



Explain the impact of
aducanumab (Aduhelm™)
on amyloid plaques in
the brain, and the drug's
potential benefits and
side effects



Explain the
pathways to
access
treatment



Describe the
resources available
through the
Alzheimer's
Association®



**MORE THAN
6 MILLION**

Americans are living with Alzheimer's



**OVER
11 MILLION**

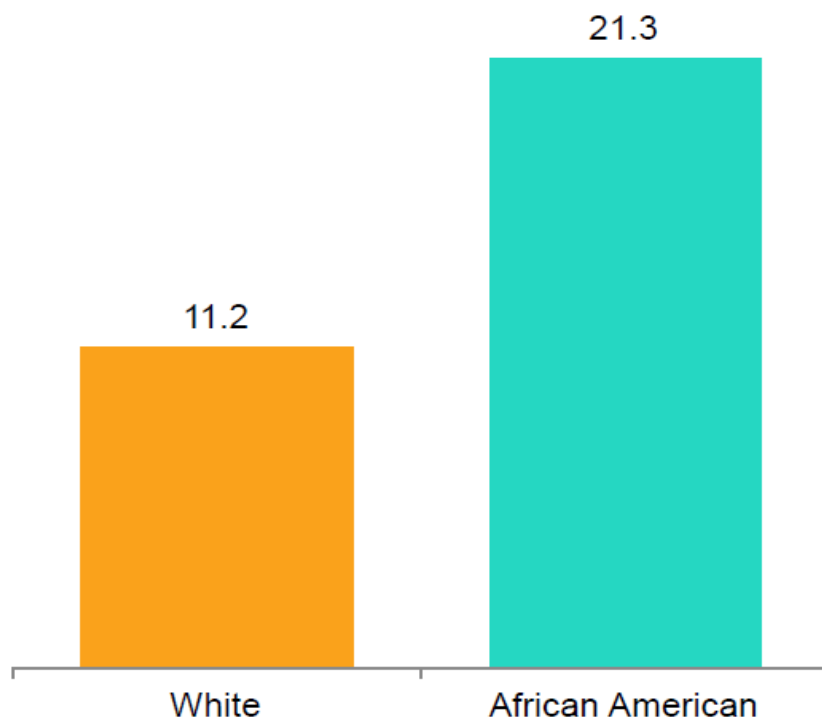
Americans provide unpaid care for people with
Alzheimer's or other dementias



Louisiana Alzheimer's Statistics

Proportion of Americans Aged 71 and Older with Alzheimer's and Other Dementias

Aging, Demographics, And Memory Study (ADAMS)



CAREGIVING
(2019)

231,000

Number
of Caregivers

264,000,000

Total Hours
of Unpaid Care

\$3,456,000,000

Total Value
of Unpaid Care



GERIATRICIANS

of
geriatricians
in 2019

31

539% increase
needed
to meet Alzheimer's
population needs in 2050

65+

NUMBER OF PEOPLE AGED 65 AND
OLDER WITH ALZHEIMER'S BY AGE*

Year	65-74	75-84	85+	TOTAL
2020	16,000	40,000	36,000	92,000
2025	18,000	49,000	40,000	110,000

* Totals may not add due to rounding



HOSPITALS
(2017)

1,771

of emergency department
visits per 1,000 people
with dementia

22.2%

increase in emergency
department visits since 2007

22.1%

dementia patient
hospital readmission rate



HOSPICE
(2017)

4,786

of people in hospice
with a primary diagnosis
of dementia

19%

of people in hospice have a
primary diagnosis of dementia



MEDICARE

\$29,001

per capita Medicare
spending on people with
dementia (in 2019 dollars)



MEDICAID

**\$765
MILLION**

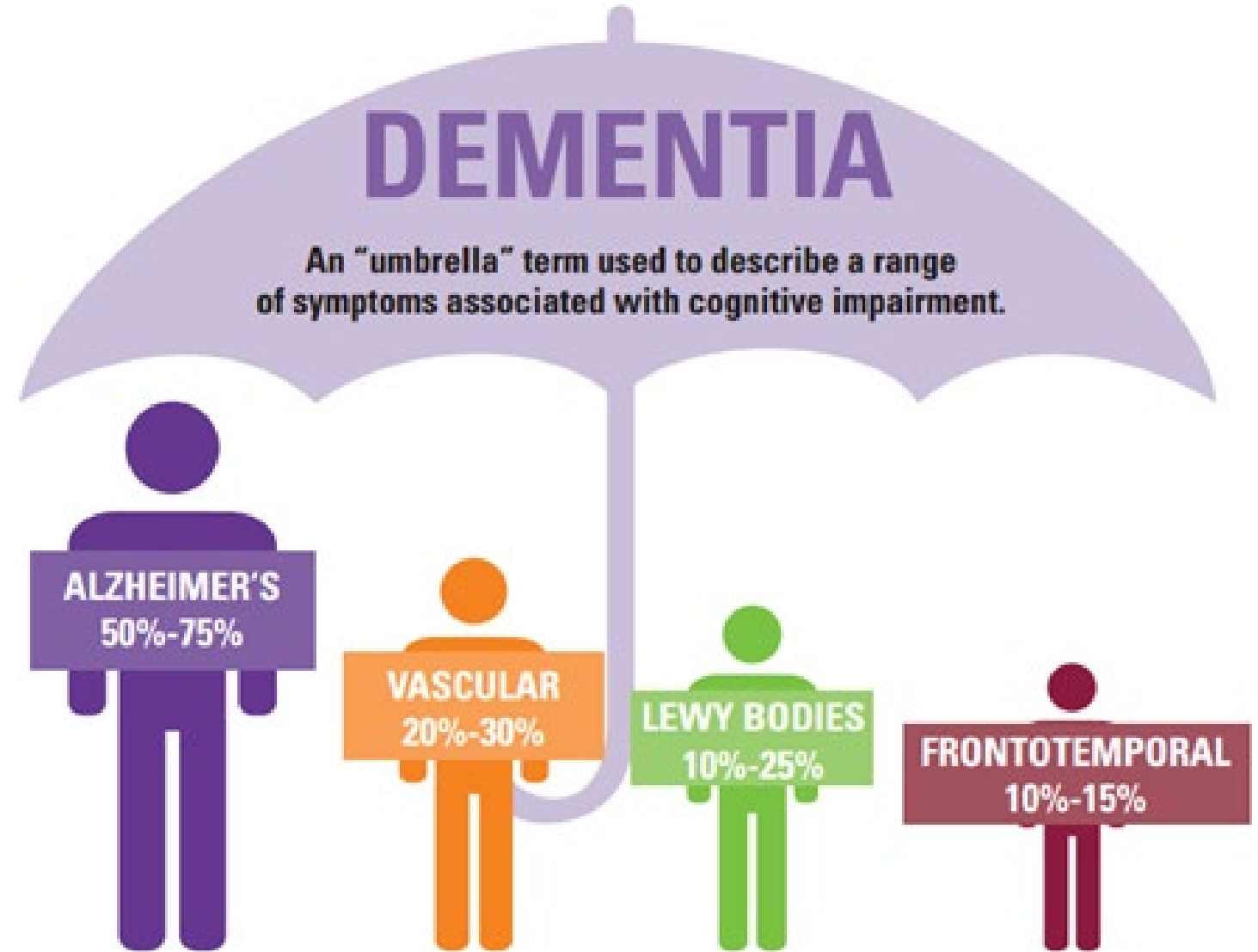
Medicaid costs of caring for
people with Alzheimer's (2020)

22.1%

change in costs
from 2020 to 2025

What is Dementia & Alzheimer's?

- Dementia is a collection of symptoms related to cognitive decline
- Can include cognitive, behavioral and psychological symptoms
- Due to biological changes in the brain
- Alzheimer's is most common cause



Who is at risk?

- Age
- Family history
- Heredity
- Head injury
- Lifestyle

1 in 3
seniors
dies with
Alzheimer's
or another
dementia

It kills more
than breast
cancer and
prostate
cancer
combined

**BLACK / AFRICAN
AMERICANS** are about

2x

and **HISPANIC /
LATINOS** are about

1.5x

more like than **WHITES**
to have Alzheimer's or
other dementias...

...YET they are less
likely to receive a
diagnosis



The impact on caregivers

- People age 65+ survive an average of **four to eight years** after a diagnosis, yet some live as long as **20 years**.
- Individuals with Alzheimer's will spend an average of **40 percent** of the time in dementia's most severe stage.
- The long duration of the disease **contributes significantly to the public health impact of Alzheimer's**.



Who Are the Alzheimer's Caregivers?



Of caregivers who
provide more than 40
hours per week of care,

73%

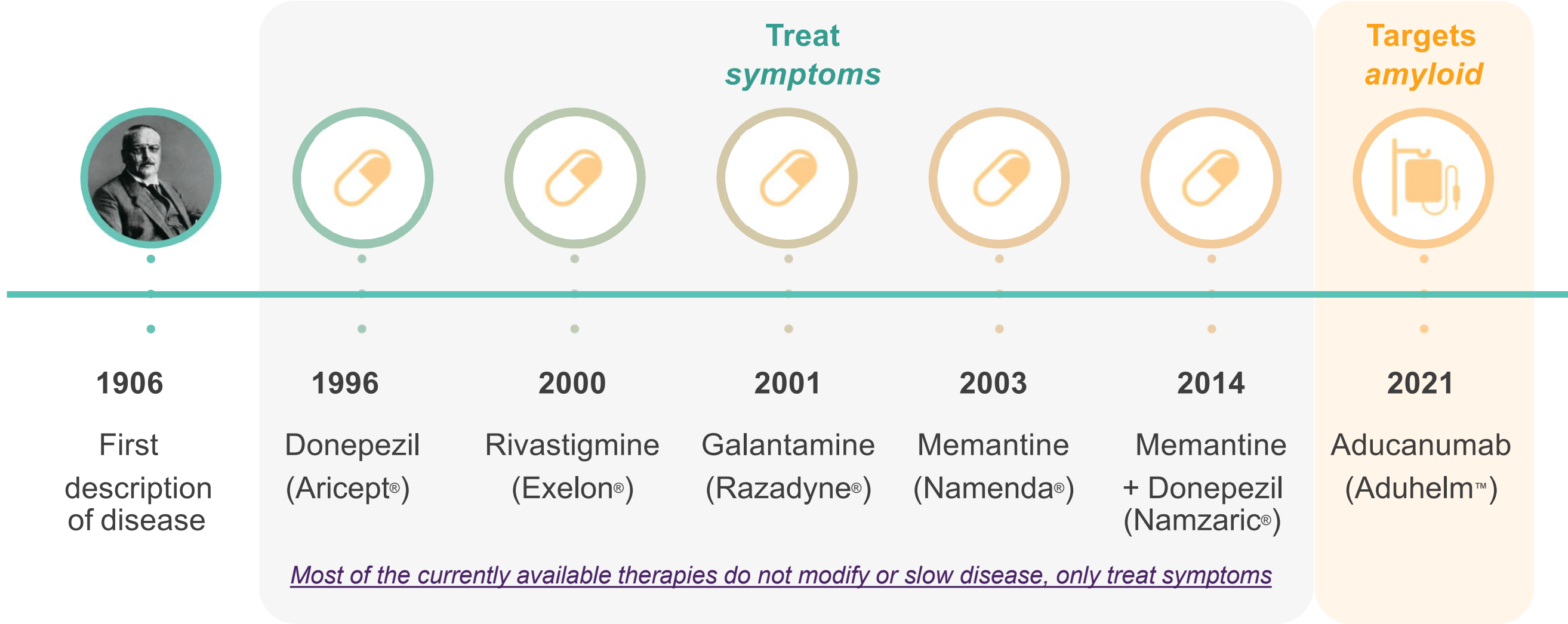
are women.

Cost of Alzheimer's Care Will Rise



Total annual payments for health care, long-term care and hospice care are projected to increase from \$305 billion in 2020 to **more than \$1.1 trillion in 2050**

FDA-Approved Therapies for Alzheimer's

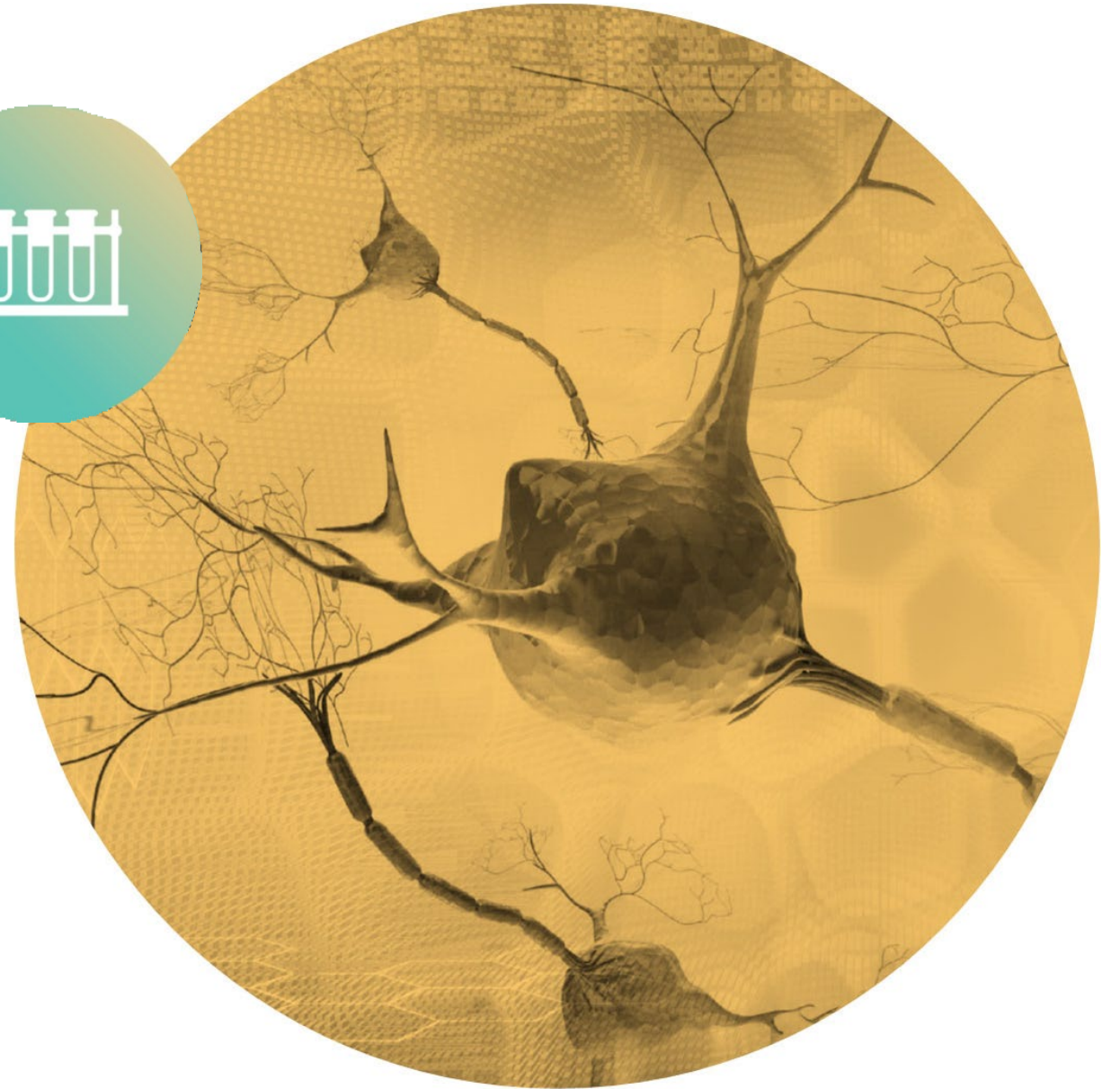


Alzheimer's Is a Complex Disease

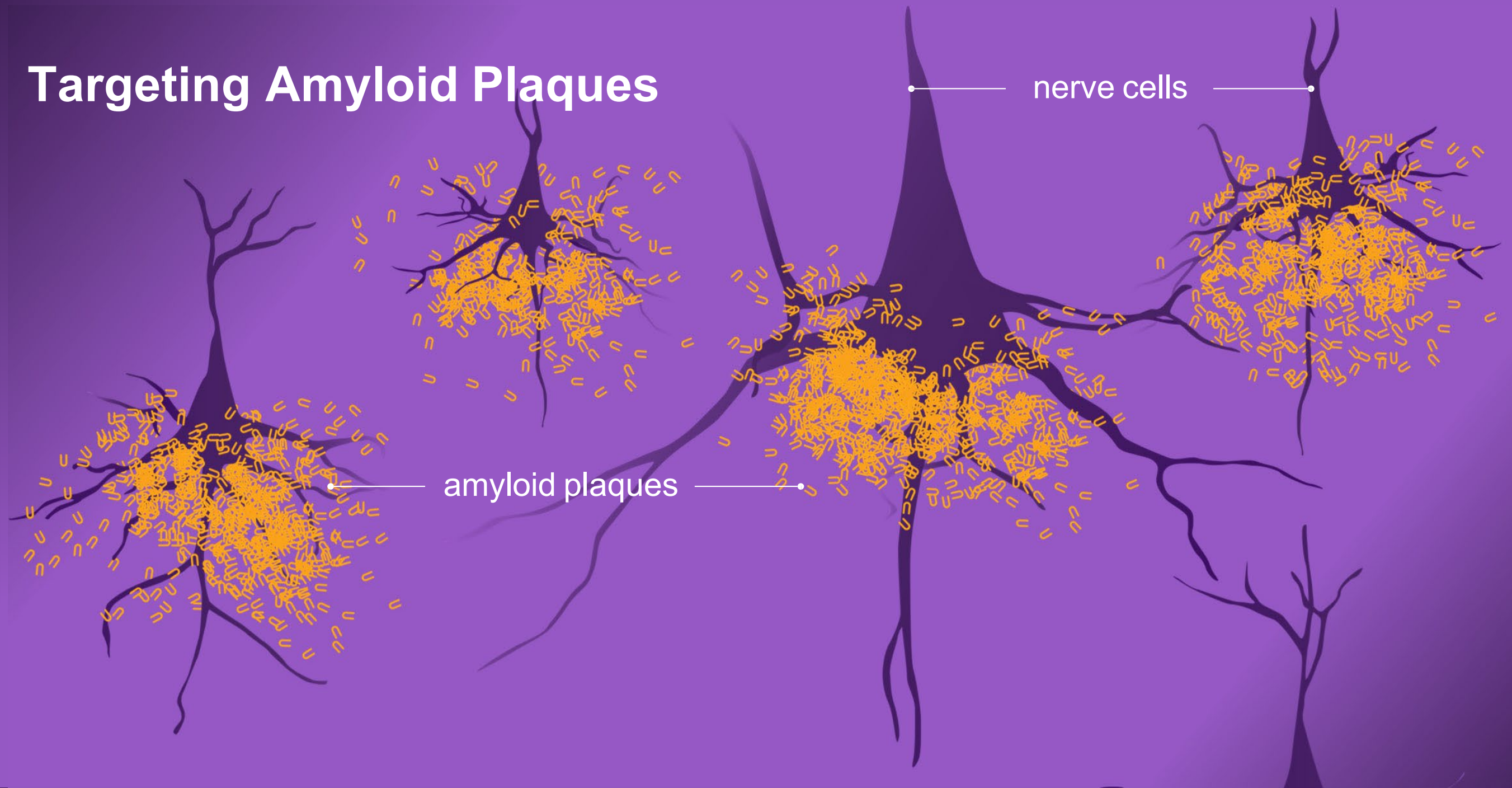
Research is targeting many potential causes of Alzheimer's disease, including the two hallmarks of the disease:

Tau neurofibrillary tangles

Beta-amyloid protein plaques



Targeting Amyloid Plaques



How Aducanumab Is Designed to Work



First treatment to address the underlying biology of Alzheimer's disease
(Not a cure)



Targets and reduces amyloid plaques in the brains of individuals living with Alzheimer's

Treatment may be appropriate for people with both:



Mild cognitive impairment (MCI) due to Alzheimer's disease or mild (early) Alzheimer's dementia



Evidence of a buildup of amyloid plaques in the brain

Benefits May Include:



Reduction in cognitive decline

(memory and thinking)



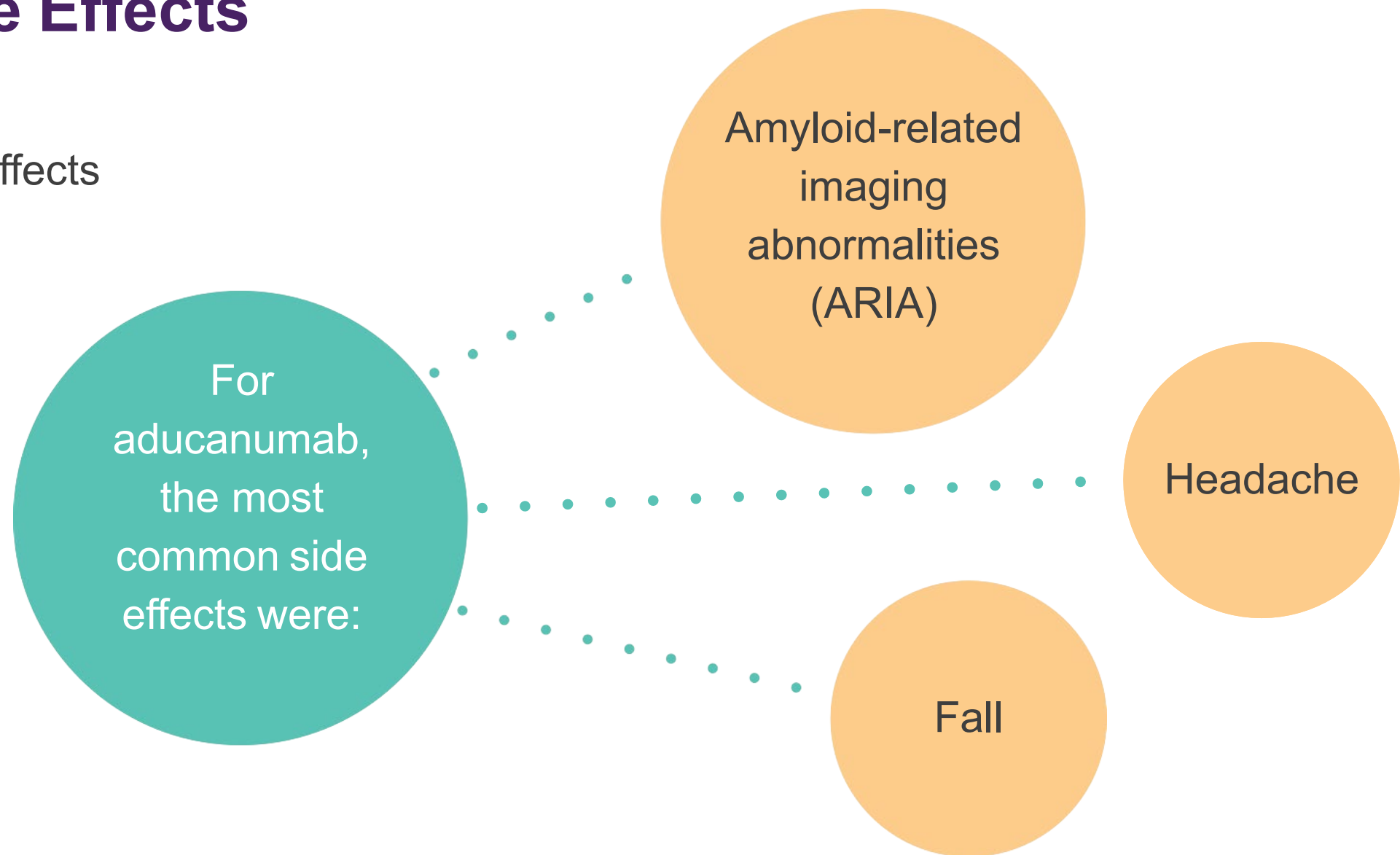
Reduction in functional decline

(activities of daily life, sustained independence)

Individual response to aducanumab may vary

Possible Side Effects

All drugs have side effects



Amyloid-Related Imaging Abnormalities (ARIA)



- ARIA is a common but manageable side effect that does not usually cause any symptoms, but can be serious
- It is typically a temporary swelling in areas of the brain that usually resolves over time
- Some people may also have small spots of bleeding in or on the surface of the brain

Patients should be monitored for ARIA before and during treatment with MRI scans

How the Treatment is Administered



By IV infusion
(by vein into the
bloodstream)



every 4 weeks



In general, infusion
can be done at:
- Hospitals
- Infusion therapy centers

Who Is a Potential Candidate for the Treatment?

Treatment may be appropriate for people with both:

1. Mild cognitive impairment (MCI) due to Alzheimer's OR mild (early) Alzheimer's dementia
2. Evidence of a buildup of amyloid plaques in the brain
 - *Tests like cerebrospinal fluid (CSF) analysis or amyloid PET imaging should be a part of the diagnostic process to determine eligibility for the treatment*

Not approved for other types of dementia.

How to Access Treatment

- Nationwide distribution and implementation will take some time
- Talk to your doctor to determine if you are a candidate for the treatment. You may be eligible if you have both:

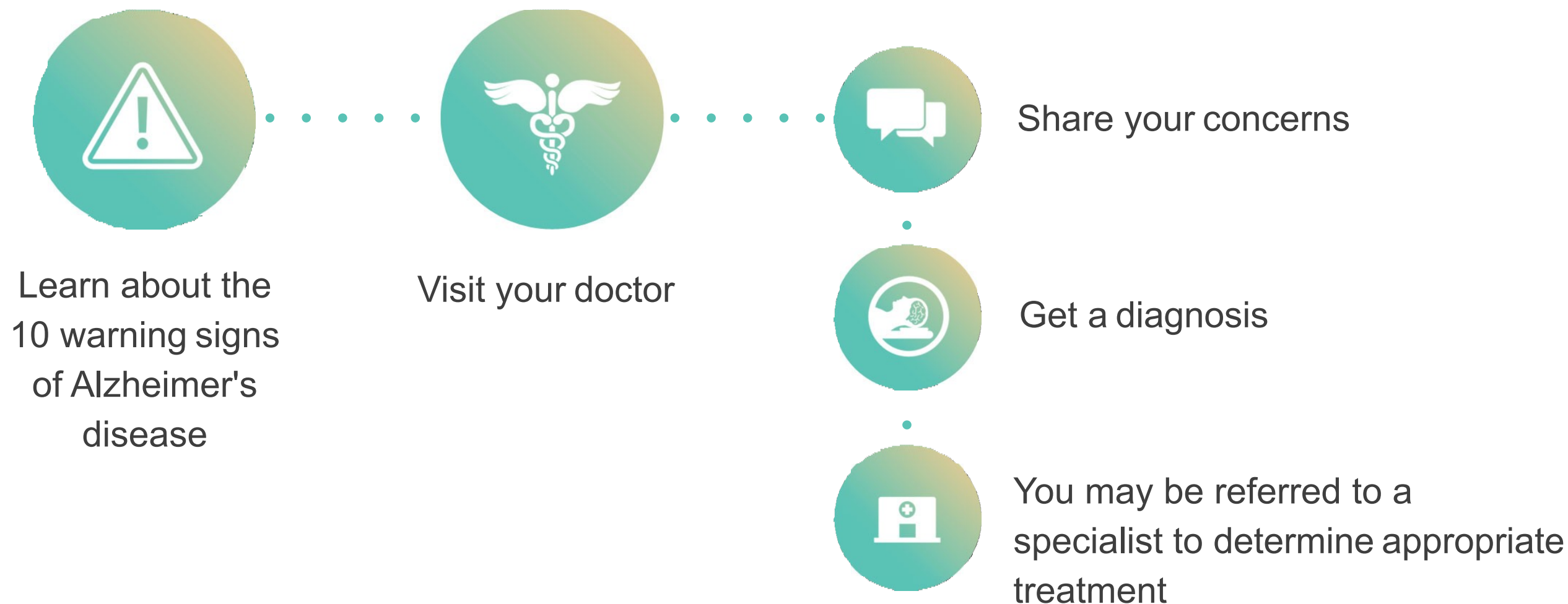
A diagnosis of MCI due to Alzheimer's or mild (early) Alzheimer's dementia

Confirmation of amyloid plaques in the brain

- You may be referred to a specialist to determine if it is an appropriate treatment for you



If You Do Not Have a Diagnosis



Coverage for Cost of Treatment

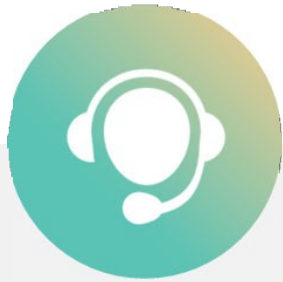
At this time, we do not know...

What insurance coverage will be for aducanumab

How Medicare will cover this treatment

The Alzheimer's Association will do everything in its power to ensure access to the drug, any tests needed during the treatment process, and other associated costs — including any diagnostic.

Alzheimer's Association Resources



24/7 HELPLINE

1.800.272.3900

- Information and referral
- Care consultation
- Language line allows translation services to support 200+ languages



ALZ.ORG

- Information and referral
- Information/resources for every stage, in several languages
- Free online education programs, several available in Spanish
- Online resources
 - ALZConnected®
 - Community Resource Finder



IN THE COMMUNITY

- Education programs, support groups and early-stage programs
- Culturally and linguistically appropriate materials, including Spanish-language and LGBTQ-focused brochures

24/7 Helpline

- Available around the clock, 365 days a year.
- Helpline specialists and master's-level clinicians offer confidential support and information.
- Bilingual staff and translation service in 200+ languages
- Live chat available.
- TTY Service 866.403.3073



24/7 Helpline
800.272.3900

alzheimer's  association®



Live Chat

Virtual Programs

- Free online e-learnings available at www.alz.org
 - 10 Warning Signs
 - Understanding Alzheimer's and Dementia
 - Dementia Conversations
 - Effective Communication Strategies
 - Legal and Financial Planning
 - Understanding and Responding to Dementia-Related Behaviors
- ALZ Navigator



We have transitioned in-person support groups and education programs to virtual platforms during COVID-19 pandemic

Community Resource Finder

www.communityresourcefinder.org

Get easy access to resources, community programs and services.

Based on guidance from local governments and health departments during the COVID-19 crisis,
many programs will be offered virtually rather than in-person.



PROGRAMS AND EVENTS



PROGRAMS AND EVENTS



CARE AT HOME



COMMUNITY SERVICES



HOUSING OPTIONS



MEDICAL SERVICES



Our Vision: **A world without
Alzheimer's and all
other dementia®.**

Stacey Denham MSW, MPH
sdenham@alz.org

800.272.3900 | [alz.org](https://www.alz.org)



Questions?

RURAL HEALTH WORKSHOP

Thank you for joining us!

