

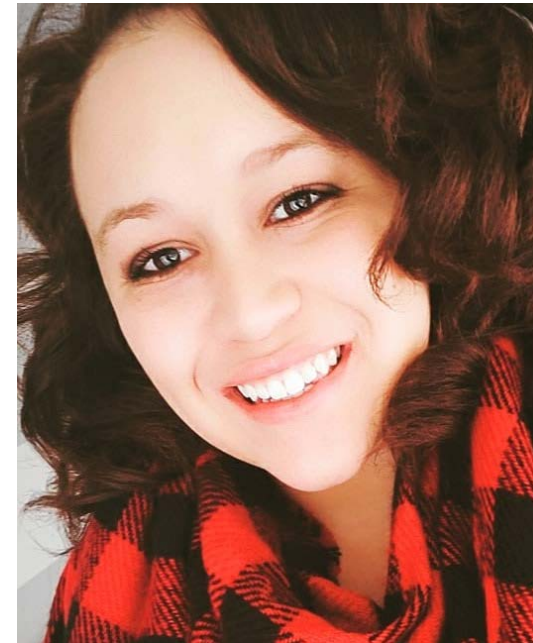
RURAL **HEALTH** WORKSHOP

Moving the Population Health Cohort Forward: Transitioning to HELM



Speakers

- Reotta Pierce, MPA
 - Heart Disease Program Manager
 - Well-Ahead Louisiana
- Hannah Gutzmer
 - Product Manager
 - FORGED Development



Learning Objectives

- Recognize how data will be utilized to direct process improvement.
- Identify how Electronic Health Records utilization will be maximized to their fullest abilities.
- Utilize HELM to refer patients to community resources.
- Operate and identify the ease of utilizing HELM Capabilities for communication, resource sharing, and data visualization.

Data Transition

The Why

- Eliminate Manual Processes
- Support Bi-Directional E-referral
- Dashboard
- Build a Community

Why?

Introducing Health Evaluation Lifestyle Management (HELM)

What is HELM?



What does HELM do?



**How will HELM
support the Cohort?**

PHC Support

- Assisting in the removal of barriers than can hinder quality of care
- Provides a central resource for patient navigation and care coordination
- A web-based application

Secured Information Sharing



[Home](#) [Documents](#) [Cohort Members List](#) [Practice Coach Hub](#) [Information Center](#)

WELL-AHEAD

Well-Ahead Louisiana Health Improvement Portal



Information Center

May 27

What is TargetBP?



Information Center

April 10

**Louisiana Provider
Education | Louisiana
Physician Resources**

Medication Therapy Management is a...



Information Center

April 10

**Louisiana Provider
Education | Louisiana
Physician Resources**

Healthcare services emphasize the...

Community-Clinical Linkages

♡ Opelousas Blood Pressure Monitoring

♡ Grant Community Health Center

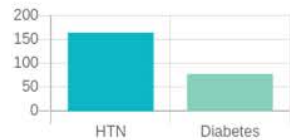
🌐 LSU Ag

↕ Iberia Comprehensive

Chronic Disease Data Dashboards

Medical Center | Overview

Total Patients



Patients by Sex



Controlled HTN

152

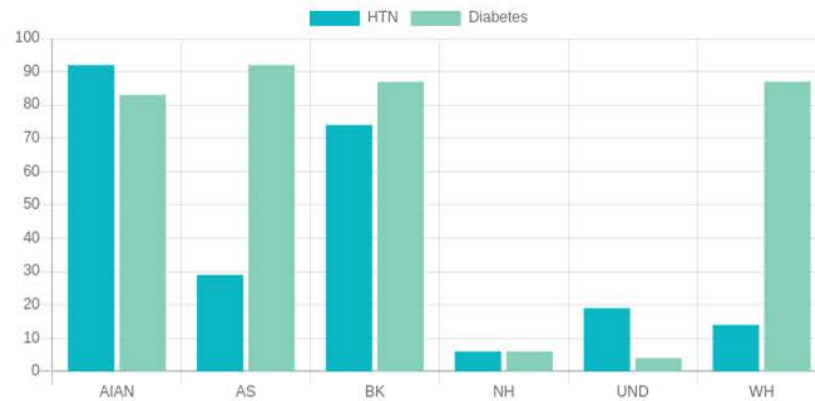
Risk HTN

67

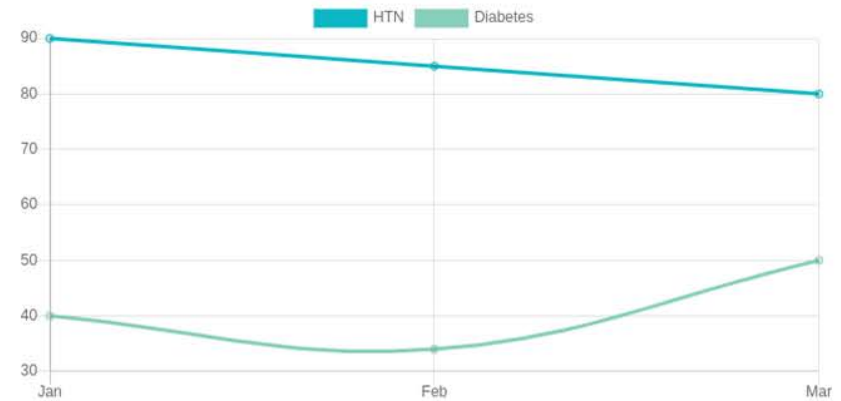
Control Diabetes

-

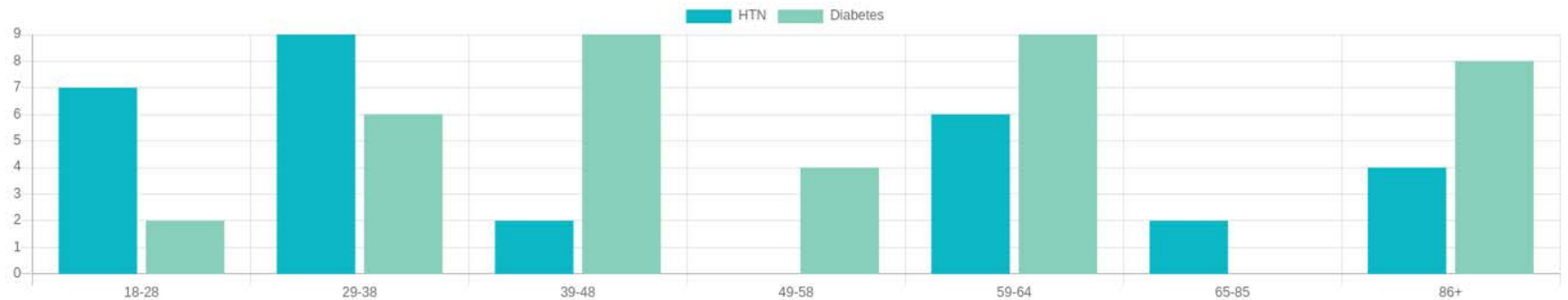
Patients by Race



Total Patients by Month



Measure by Age Group





What Can You Do?

What Do We Need From You?

- EHR Data Extraction Agreement
- HELM Trainings
- Make an Impact



HELM Demonstration



Launch Day

When is this Launching?

- January 2022



Questions?

Contact Information

- Reotta Pierce, Heart Disease Program Manager, Well-Ahead Louisiana
 - Reotta.Pierce@la.gov
- Hannah Gutzmer, Product Manager, FORGED Development
 - rhgutzmer@forgeddev.com

Join the Provider Education Network!

- The Provider Education Network provides tools, training and technical assistance opportunities that help you provide the best possible care to your patients and help make every angle of your facility more effective.
- Join today at www.wellaheadla.com/join-provider-education-network

RURAL **HEALTH** WORKSHOP

Thank you for joining us!

