



# Introduction: What is ECHO?

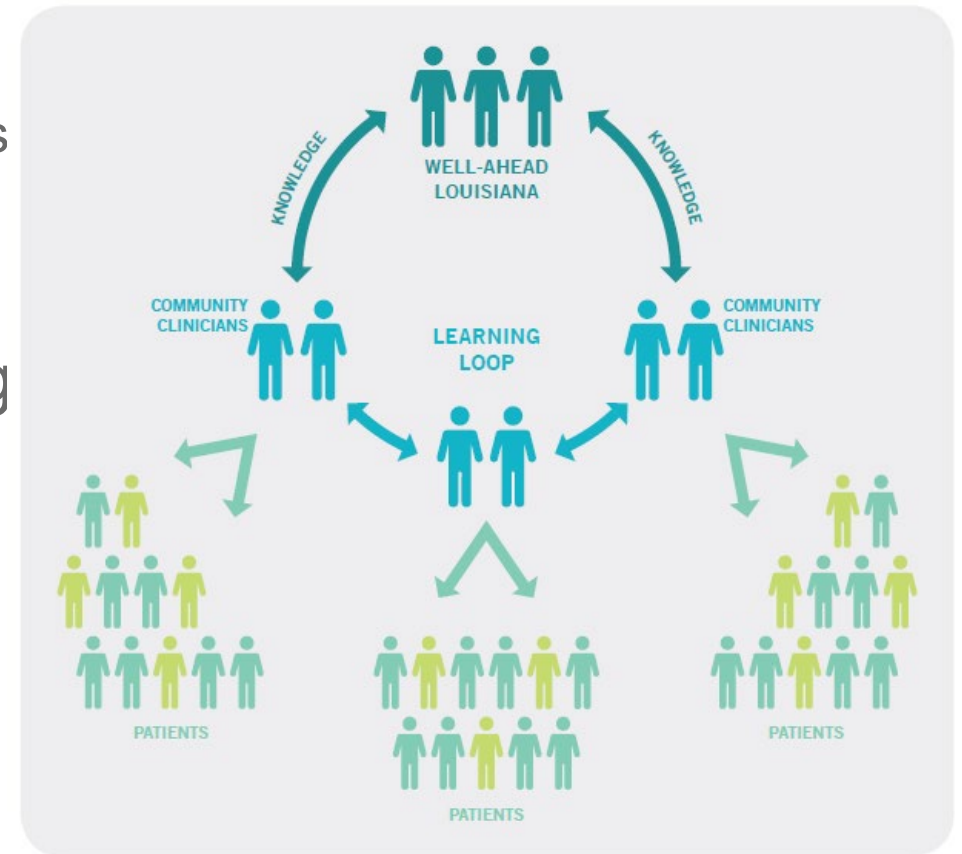
Dragana Lovre, MD

# What is ECHO?

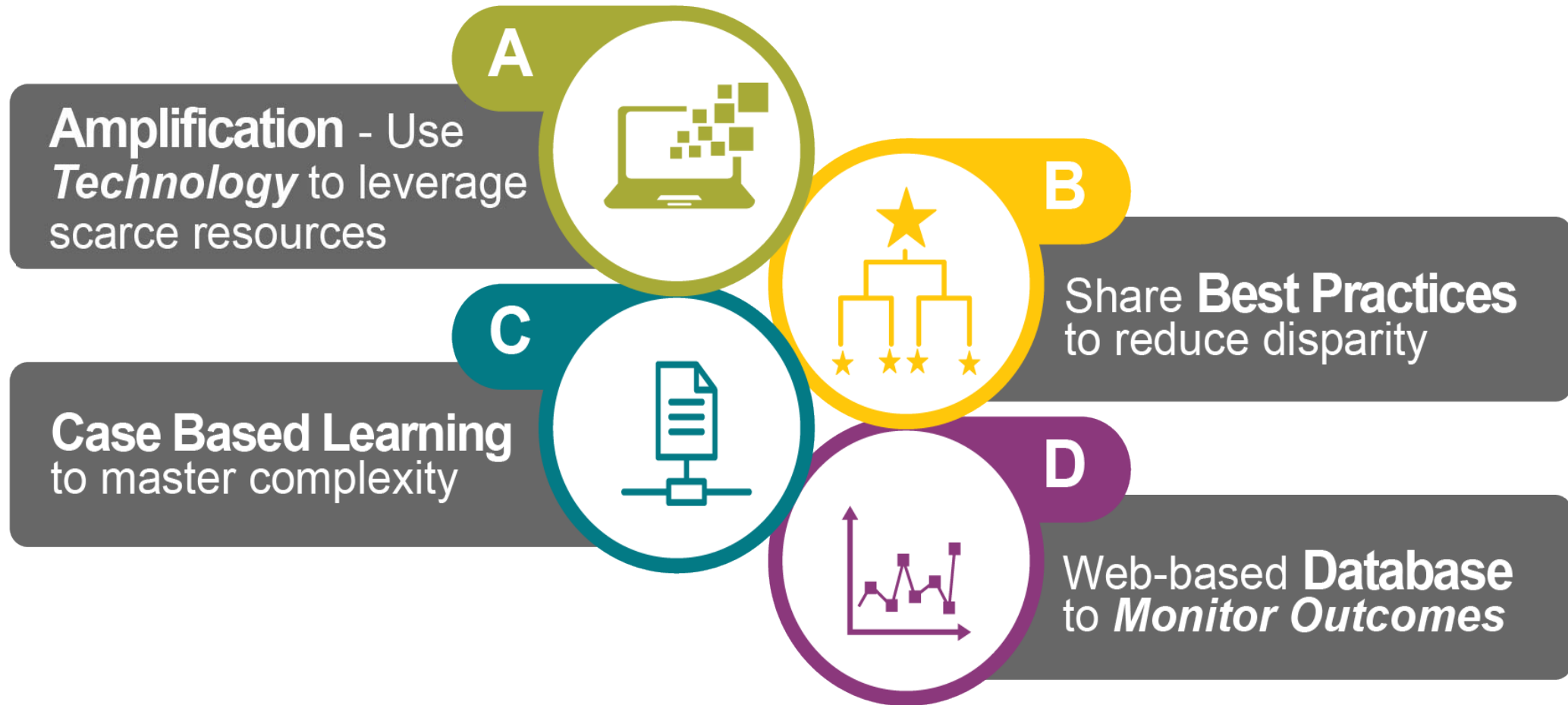
- Project ECHO® (Extension for Community Healthcare Outcomes) is a movement to demonopolize knowledge and amplify the capacity to provide best practice care for underserved people all over the world.
- The model connects primary care providers and specialists on a live, virtual platform to share knowledge and expand treatment capacity in rural communities.

# What does ECHO look like?

- ECHO is “hub and spoke” model
  - Hub Team is a multidisciplinary group of subject-matter experts
  - Spoke partners are community providers/clinics
- ECHO sessions function like virtual grand rounds, combined with mentoring and patient case presentations.
  - Spoke partners will present sample patient cases to will discuss and help determine the best treatment for the patient.
  - Specialists serve as mentors and colleagues, sharing their medical knowledge and expertise with primary care clinicians.



# The ECHO Framework



# How is ECHO used?



## Prevention

- Smoking cessation
- HPV vaccination
- Hepatitis B vaccination
- Sun safety & skin cancer prevention
- Community cancer intervention & prevention



## Screening

- Dermatology
- Breast cancer
- Cervical & colorectal cancer
- Oral & lung cancer
- Pathology best practices
- Training peer and community health advocates



## Treatment

- Pain & toxicity management
- Cancer care navigation
- Precision medicine & cancer genomics
- Palliative care
- Survivorship
- Clinical trial enrollment

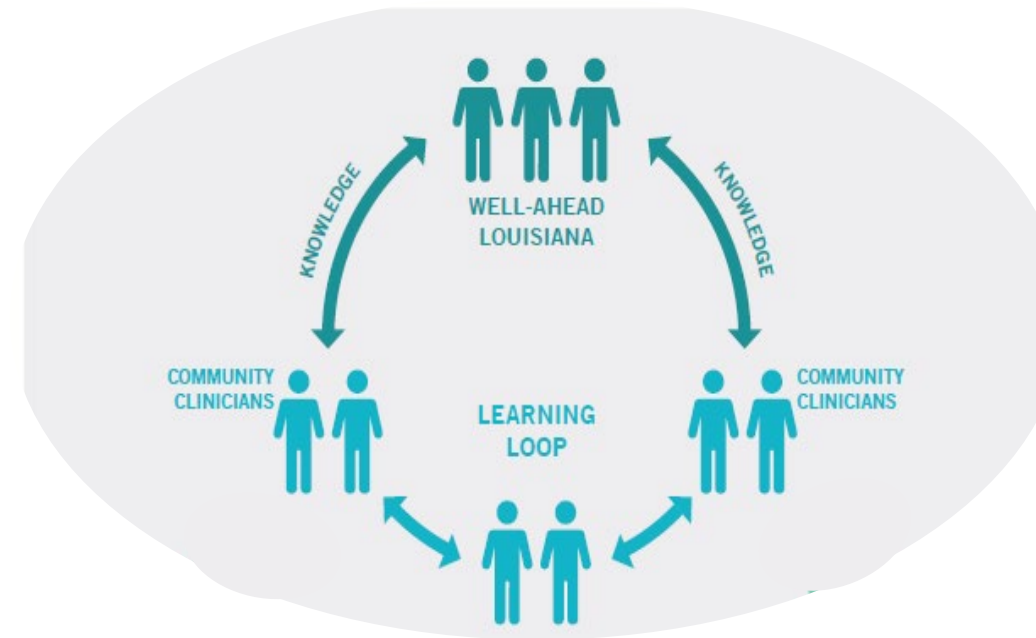
# Benefits of ECHO

- Prevention, Screening, and Treatment
- Quality and Safety
- Rapid Learning and best-practice dissemination
- Standardized healthcare
- Healthcare access in rural communities
- Reduced disparities
- Workforce Training and Force Multiplier
- Professional Satisfaction/Retention
- Supporting the Medical Home Model
- Reduce patient testing and travel costs
- Prevent increased cost for untreated disease (e.g.: liver transplant or dialysis)
- Integration of Public Health into treatment paradigm

**Democratize Knowledge**

# Basic ECHO Session Structure

- **ECHO sessions:**
- RSS - regularly scheduled sessions
- Include Subject-Matter Experts and learners.
- Use of the ECHO model
  - brief lectures
  - case-based learning to create **Learning Loops**.
  - Learning Loops: The sharing of knowledge between experts and community partners through active participation in sessions.



# Diabetes ECHO Overview

- Well-Ahead Louisiana serves as the “hub” of specialists in Diabetes care. Our multi-disciplinary team includes: an Endocrinologist, Internal Medicine Physician, Certified Diabetes Educator, Nurse Practitioner, Pharmacist, Cardiologist, and Podiatrist.
- All clinicians in the community who work with diabetic patients are invited to join as “spokes” of the model – focus on rural primary care providers (such as RHCs and FQHCs).
- CE credits will be available for physicians, physician assistants, nurses, and pharmacists



# Diabetes ECHO Hub Team Members



Chrisey Smith,  
MBA- Program  
Manager/  
Coordinator



Dragana Lovre,  
MD - Facilitator/  
Endocrinologist  
Hub Specialist



Christine Castille,  
FNP-C, BC-ADM,  
CDCES - Nurse  
Practitioner/CDE  
Hub Specialist



Raven Jackson,  
PharmD -  
Pharmacist Hub  
Specialist



Vy Anh Mai, MD,  
MS - Internal  
Medicine Hub  
Specialist



Satish Gadi, MD -  
Cardiologist Hub  
Specialist



Anthony Decuir,  
Jr., MD - Podiatrist  
Hub Specialist

# Basic ECHO Session Structure

