

# Overview of Special Care Dentistry

Ashland Doomes DMD



# What is Special Care Dentistry

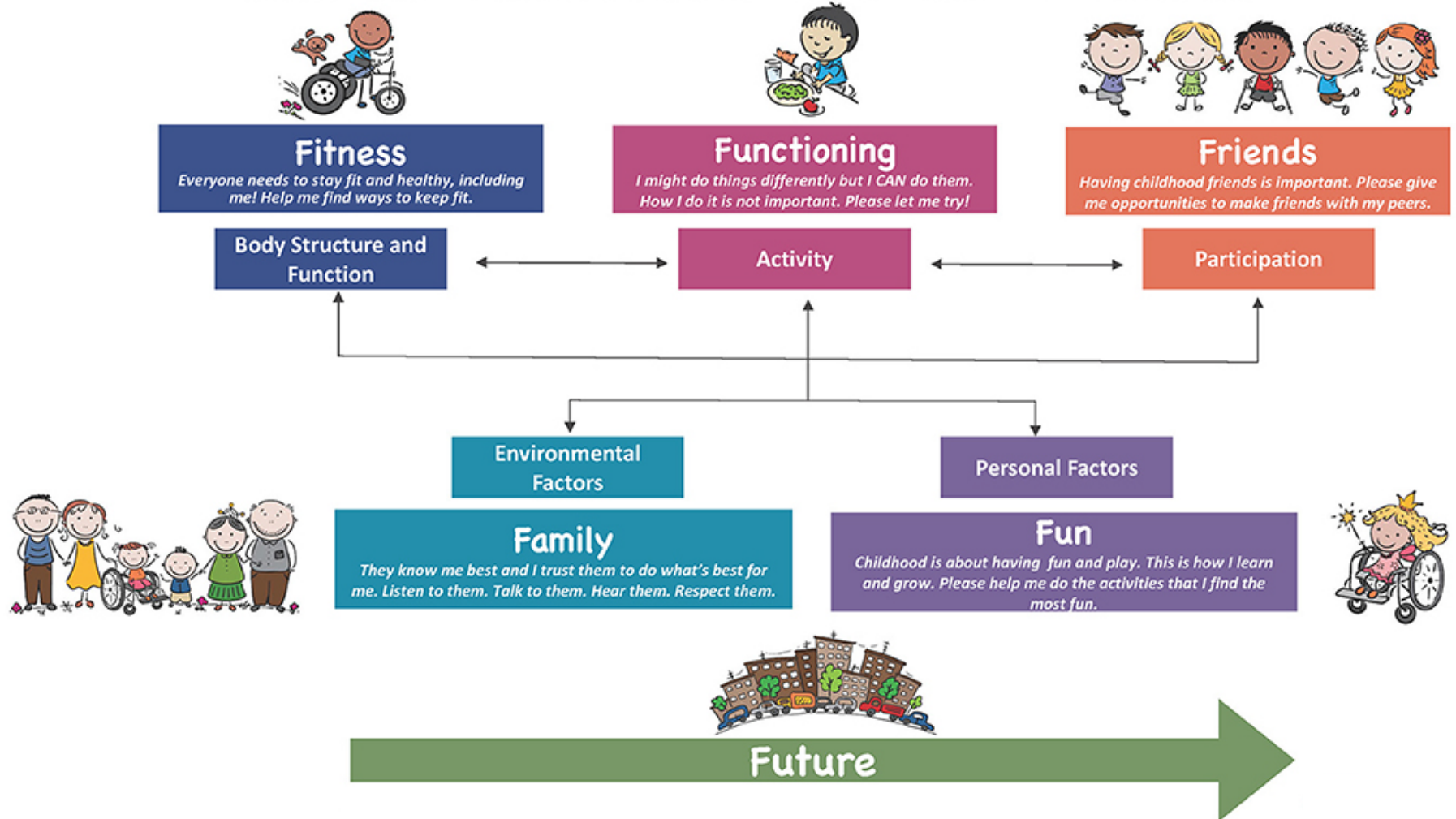
## **SCDA Definition - Special Care Dentistry**

*Special Care Dentistry is that branch of dentistry that provides oral care services for people with physical, medical, developmental, or cognitive conditions which limit their ability to receive routine dental care.*

## **Populations**

- *American Association of Hospital Dentists (AAHD)*
- *Academy of Dentistry for Persons with Disabilities (ADPD)*
- *American Society for Geriatric Dentistry (ASGD).*

# The ICF Framework<sup>1</sup> and the 'F-Words'<sup>2</sup>



# Disability as a Bio- Psycho - Social Phenomenon



Biologically- Complex Medical History



Psych- Complex Psychology



Social Complex Social History

# Adaptations to Care

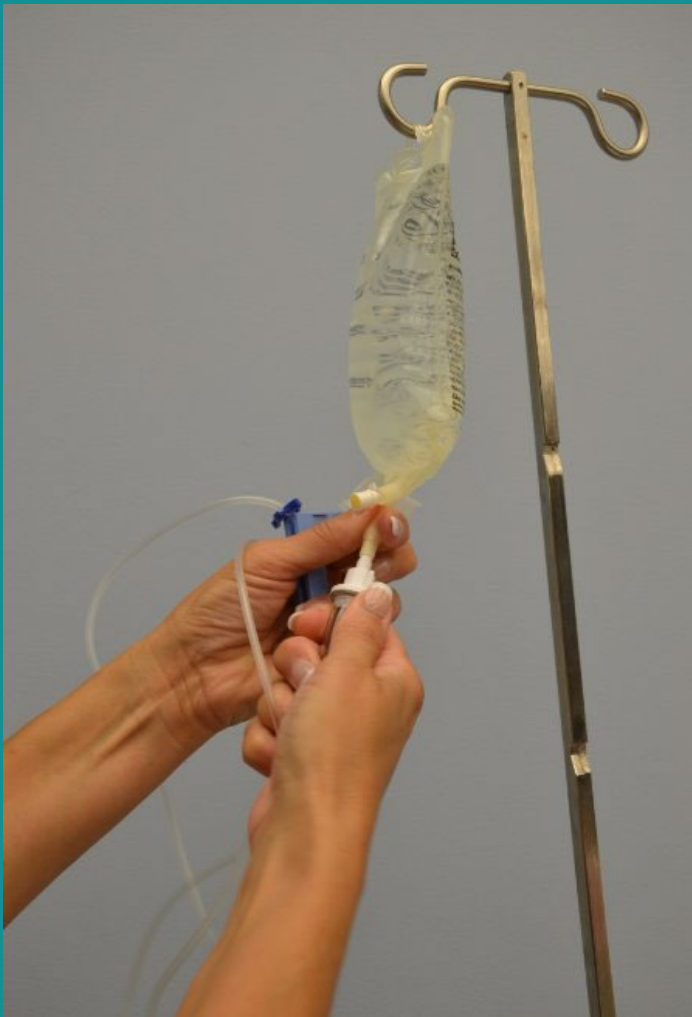


# Behavioral Supports

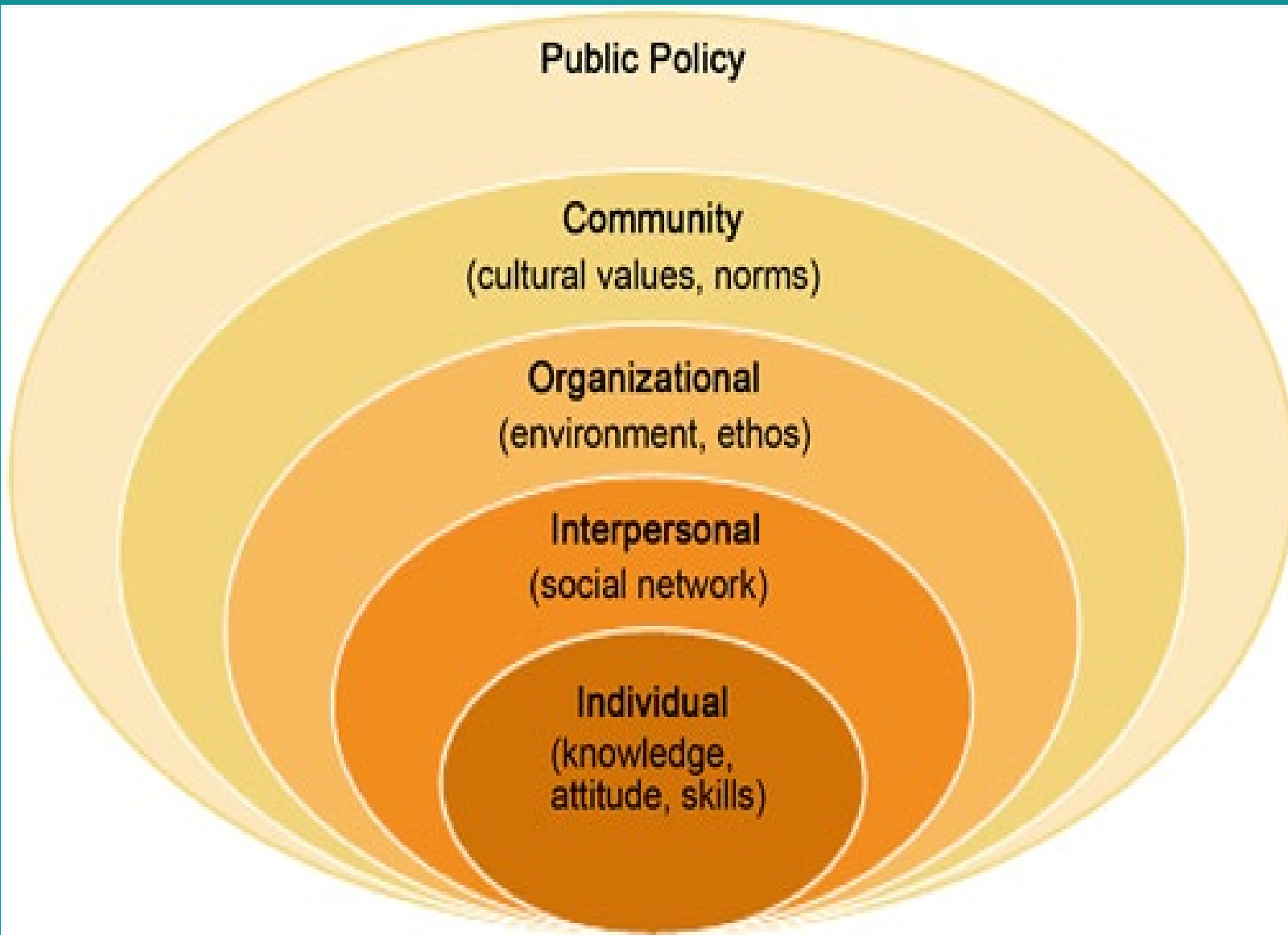


# Physical Supports





Pharmacological



# Models of Health

- Individual
  - Training
  - Licenses / hospital privileges
  - IV Sed Training
  - Identifying decision-makers
- Organizational / Interpersonal
  - Team communication
  - Moral Distress
  - De-escalation
- Community / Societal
  - Payment / Medicaid
  - Ableism



ThePhoto by PhotoAuthor is licensed under CCYYSA.