

# Dental ECHO

02/20/2026

# Welcome

# Disclaimer

The Louisiana Department of Health (LDH) employees, contractors, affiliates, et al. have no actual or potential conflict- of- interest in relation to this program presentation. The content herein is intended for general guidance, not as legal advice.

Laws and regulations take priority if there are any differences. Only LDH's Secretary or Surgeon General can give official statements. LDH cannot speak for other government agencies, and if you need legal advice, you should consult a lawyer.

# Agenda

1. Introductions (5 minutes)
2. Program Overview/Case Presentation (10 minutes)
3. Clarifying Questions (10 minutes)
4. Recommendations (10 minutes)
5. Didactic Presentation (20 minutes)
6. Wrap Up & Announcements (5 minutes)

# Introductions

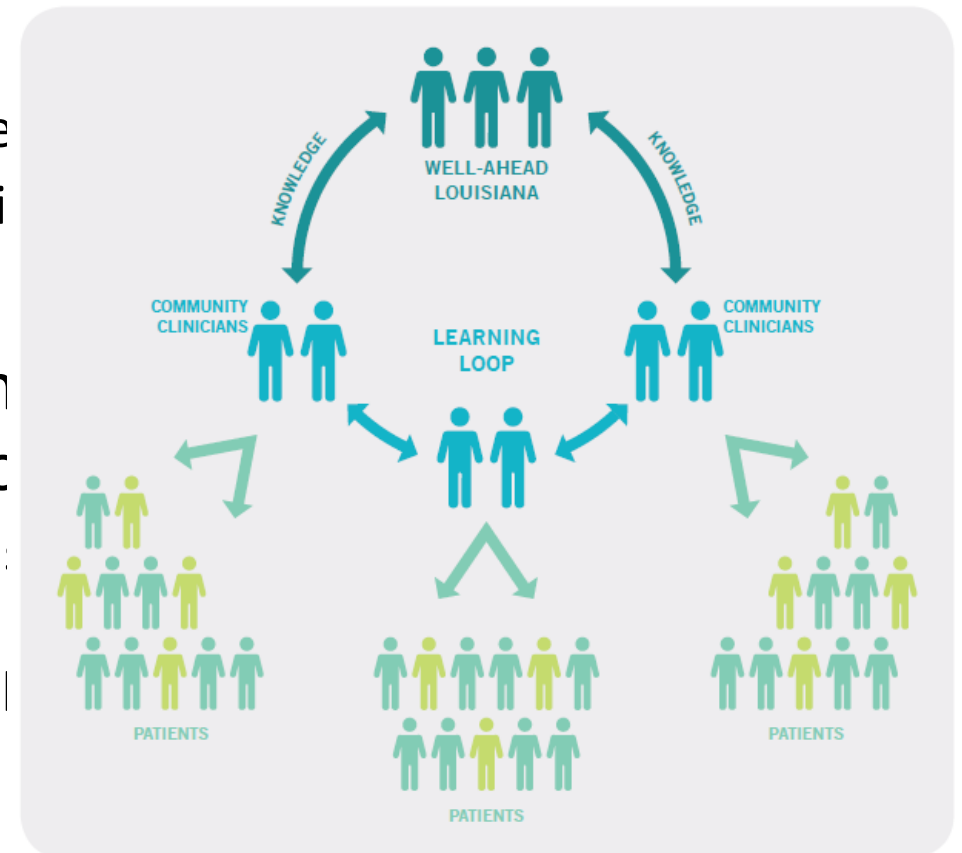
# Case Presentation

# What is ECHO?

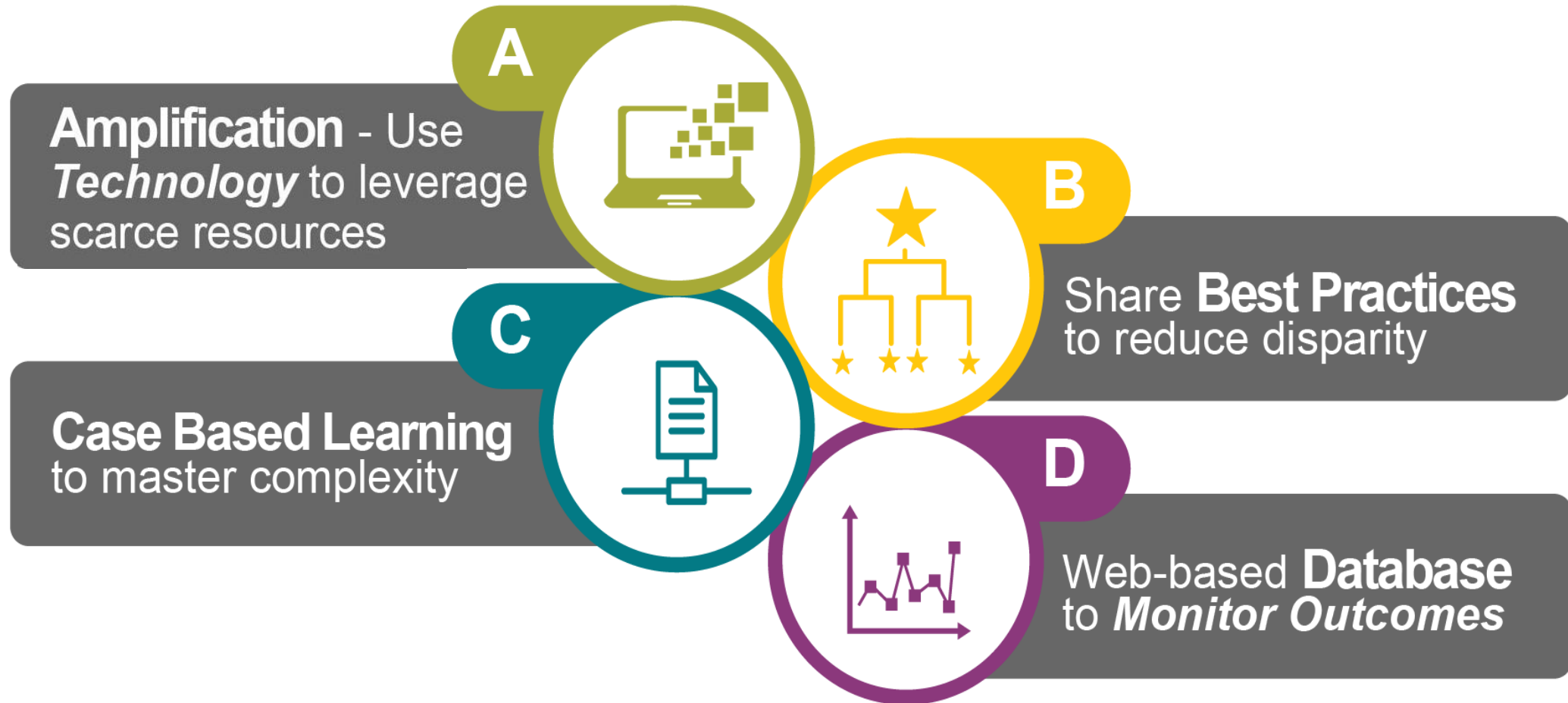
- Project ECHO<sup>®</sup> (Extension for Community Healthcare Outcomes) is a movement to demonopolize knowledge and amplify the capacity to provide best practice care for underserved people all over the world.
- The model connects primary care providers and specialists on a live, virtual platform to share knowledge and expand treatment capacity in rural communities.

# What does ECHO look like?

- ECHO is “hub and spoke” model
  - Hub Team is a multidisciplinary group of subject matter experts
  - Spoke partners are community providers/clinicians
- ECHO sessions function like virtual grand rounds, mentoring and patient case presentations
  - Spoke partners will present sample patient cases and receive feedback on best treatment for the patient.
  - Specialists serve as mentors and colleagues, sharing their expertise with primary care clinicians.



# The ECHO Framework



# How is ECHO used?



## Prevention

Smoking cessation

HPV vaccination

Hepatitis B vaccination

Sun safety & skin cancer prevention

Community cancer intervention & prevention



## Screening

Dermatology

Breast cancer

Cervical & colorectal cancer

Oral & lung cancer

Pathology best practices

Training peer and community health advocates



## Treatment

Pain & toxicity management

Cancer care navigation

Precision medicine & cancer genomics

Palliative care

Survivorship

Clinical trial enrollment

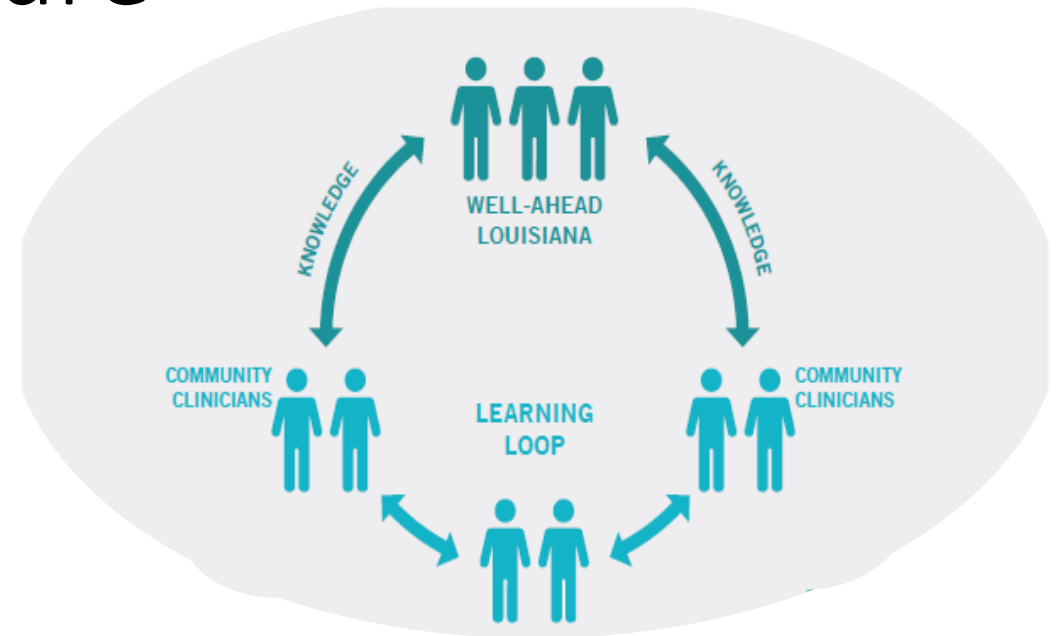
# Benefits of ECHO

- Prevention, Screening, and Treatment
- Quality and Safety
- Rapid Learning and best-practice dissemination
- Standardized healthcare
- Healthcare access in rural communities
- Reduced disparities
- Workforce Training and Force Multiplier
- Professional Satisfaction/Retention
- Supporting the Medical Home Model
- Reduce patient testing and travel costs
- Prevent increased cost for untreated disease (e.g.: liver transplant or dialysis)
- Integration of Public Health into treatment paradigm

**De-monopolize Knowledge**

# Basic ECHO Session Structure

- **ECHO sessions:**
- RSS - regularly scheduled sessions
- Include Subject-Matter Experts and learners.
- Use of the ECHO model
  - brief lectures
  - case-based learning to create **Learning Loops**.
  - Learning Loops: The sharing of knowledge between experts and community partners through active participation in sessions.

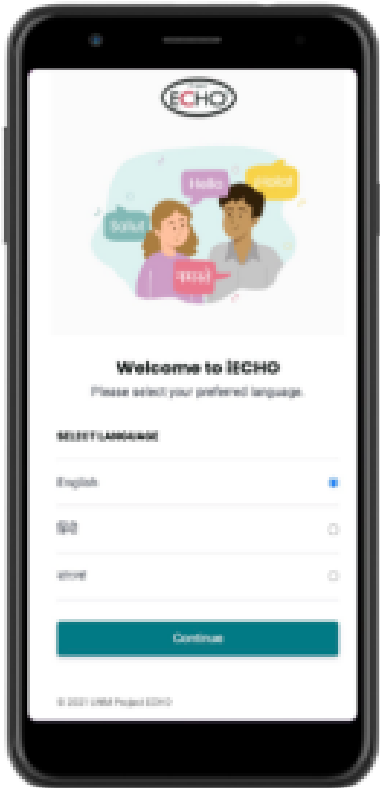


# iECHO

**All participants must create an iECHO account to join the sessions**

**If you received a temporary login and password, please complete your profile and change your password**

- The new iECHO platform is a cloud-based digital platform for the ECHO movement to create, manage and run programs at one place. It is accessible across various devices (such as mobile phones, laptops, tablets etc.). It is accessible in over 17 languages.
- Participants will receive most of the Dental ECHO correspondence, resource tools, and notifications via iECHO
  - An email will be sent from [wellahead.projectecho@la.gov](mailto:wellahead.projectecho@la.gov) to all attending participants to claim Continuing Education credits after each session.



# Clarifying Questions

# Recommendations

# Didactic Presentation

Questions?



Thank you, Joanne!

# Wrap-Up & Announcements

# Wrap-Up & Announcements

- Enter your information for attendance
- Complete post-session survey for CEUs
- Post-Series Survey
- Next Session: **March 20, 2026 from 12:00 p.m. to 1:00 p.m.**
- Next Didactic Presentation: **Water Fluoridation by Dr. Johnny Johnson**
- Send questions to [wellahead.projectecho@la.gov](mailto:wellahead.projectecho@la.gov)
- Interested in presenting a case? Email [wellahead.projectecho@la.gov](mailto:wellahead.projectecho@la.gov)

# THANK YOU

**Next Session: 03/20/2026 from 12:00 p.m. to 1:00 p.m.  
Water Fluoridation**

Well-Ahead Louisiana | Louisiana Department of Health

Contact us: [WellAhead.ProjectECHO@la.gov](mailto:WellAhead.ProjectECHO@la.gov)

Please also feel free to visit the Well-Ahead website at: <http://wellaheadla.com>

